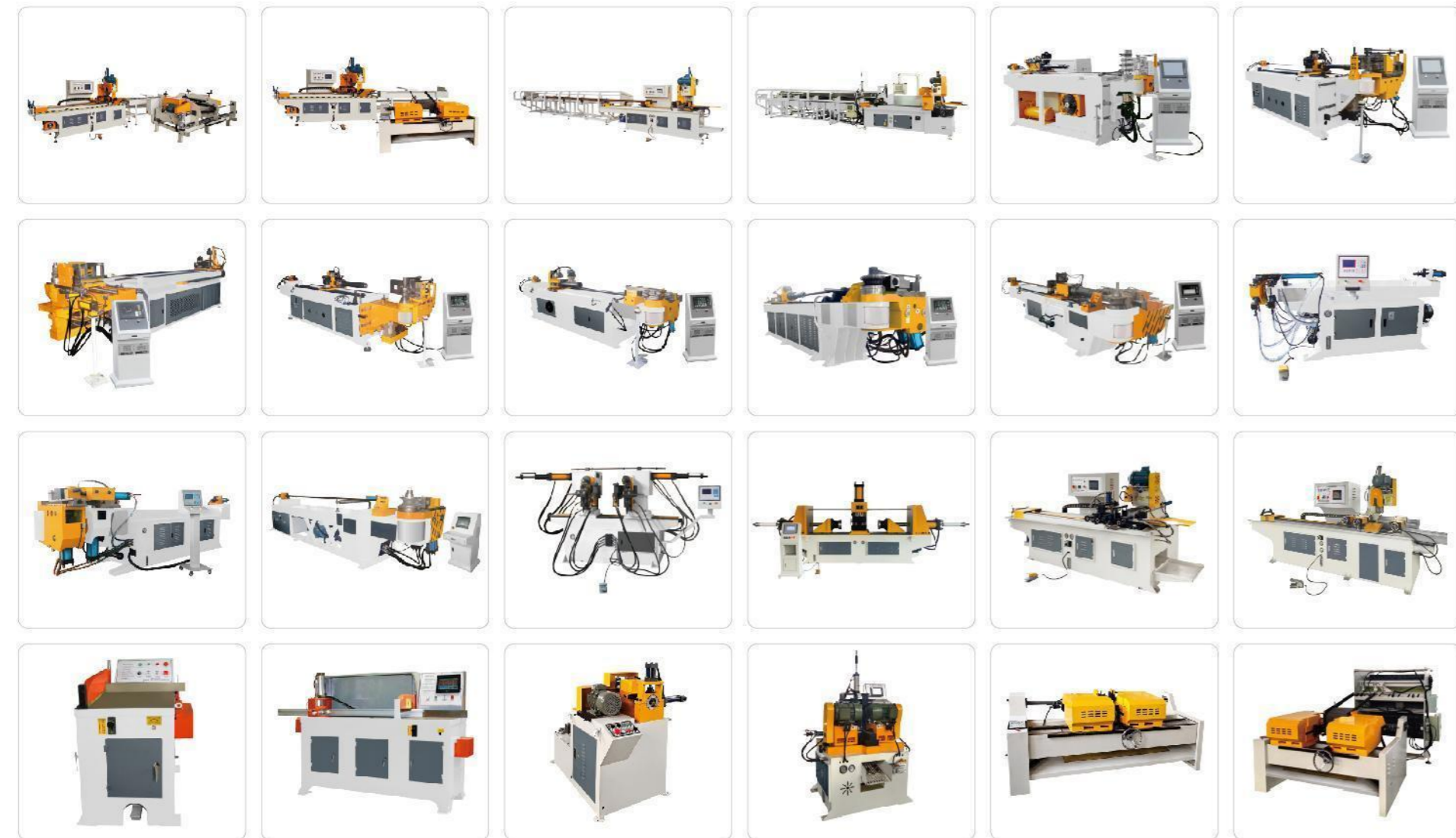


公司部分产品图片 SOME PICTURES OF COMPANY'S PRODUCTS



公司部分产品图片 SOME PICTURES OF COMPANY'S PRODUCTS



切割生产线系列 CUTTING PRODUCTION LINE SERIES

全自动管材加工生产线 (切割, 去毛刺) AUTOMATIC PIPE PROCESSING PRODUCTION LINE (CUTTING, DEBURRING)	07
全自动管材加工生产线 (切割, 倒角) AUTOMATIC PIPE PROCESSING PRODUCTION LINE (CUTTING, CHAMFERING)	08
全自动管材加工生产线 (自动上料, 切割, 去毛刺) AUTOMATIC PIPE PROCESSING PRODUCTION LINE (FEEDING, CUTTING, DEBURRING)	09
全自动管材加工生产线 (自动上料, 切割, 倒角) AUTOMATIC PIPE PROCESSING PRODUCTION LINE (FEEDING, CUTTING, CHAMFERING)	10

弯管机系列 PIPE BENDING MACHINE SERIES

CNC数控弯管机 CNC PIPE BENDING MACHINE	11-18
单头液压弯管机 SINGLE HEAD HYDRAULIC PIPE BENDING MACHINE	19-22
双头弯管机 DOUBLE-HEAD PIPE BENDING MACHINE	23

管端成型机系列 PIPE END FORMING MACHINE SERIES

管端成型机 PIPE END FORMING MACHINE	24
-----------------------------------	----

金属圆锯机系列 METAL CIRCULAR SAWING MACHINE SERIES

金属圆锯机 (CNC型) FULL AUTOMATIC METAL CIRCULAR SAWING MACHINE	25-29
金属圆锯机 (半自动型) SEMI-AUTOMATIC METAL CIRCULAR SAWING MACHINE	30

铝切机系列 ALUMINIUM CUTTING MACHINE SERIES

半自动铝型材切割机 SEMI-AUTOMATIC ALUMINIUM PROFILE CUTTING MACHINE	31
全自动铝型材切割机 FULL AUTOMATIC ALUMINIUM PROFILE CUTTING MACHINE	32-33

倒角机系列 CHAMFERING MACHINE SERIES

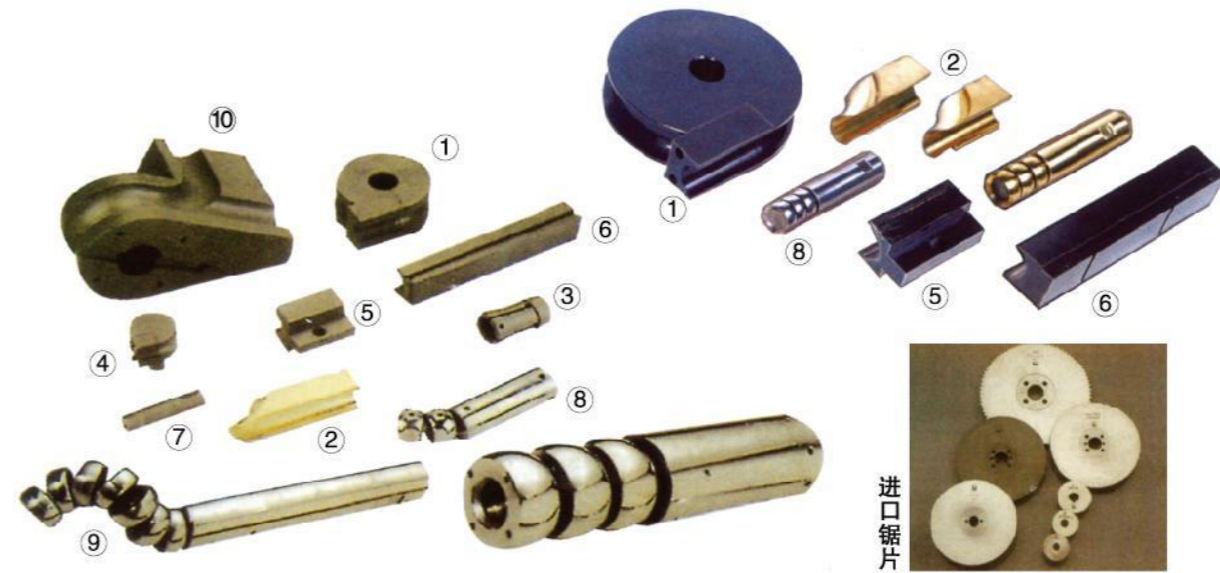
单头倒角机 SINGLE HEAD CHAMFERING MACHINE	34
双头倒角机 DOUBLE - HEAD CHAMFERING MACHINE	35-36
管材加工生产线 (自动上料, 倒角) PIPE PROCESSING PRODUCTION LINE (FEEDING, CHAMFERING)	37

其它机系列 OTHER MACHINE SERIES

封口机 SEALING MACHINE	38
滚圆机 ROUND ROLLING MACHINE	38
冲弧机 ARC PUNCHING MACHINE	38
任意角度切铝机 ALUMINIUM CUTTING MACHINE	38

车间环境 WORKSHOP ENVIRONMENT

弯管模具构成 PIPE-BENDING MOULD CONSTITUTE



- 1、弯管模 Bending former
- 2、防皱模 Crease-resist former
- 3、夹头 Clamping head
- 4、弯管模 (小半径用) Bending former (for mini radius)
- 5、夹紧模 Clamping former
- 6、滑板模 Slide plate bending former
- 7、固定型芯模 Fixed solid bending former
- 8、单反向型芯模 Single sided reverse solid bending former
- 9、万向型芯模 Universal solid bending former
- 10、成型弯管模 Forming bending former

进口锯片

加工产品 PROCESSED PRODUCTS



全自动管材加工生产线（切割，去毛刺）

AUTOMATIC PIPE PROCESSING PRODUCTION LINE (CUTTING, DEBURRING)



机械特点

- 自动切管、自动出料，连接自动去毛刺机，采用智能控制系统，节省人工，提高生产效率。
- 适用于圆管、椭圆管、方管、异型管，单支或多支自动切割，去毛刺。
- 根据不同的产品要求，专业为用户定制，自动上料架可选配。

Functional features

- Automatic pipe cutting, automatic discharging, connected with automatic deburring machine, adopting intelligent control system to save labor and improve production efficiency.
- Suitable for round pipe, oval pipe, square pipe, special-shaped pipe, single or multiple automatic cutting, deburring.
- According to different product requirements, professional customization for user needs, automatic feeding rack optional.

全自动管材加工生产线（切割，倒角）

AUTOMATIC PIPE PROCESSING PRODUCTION LINE (CUTTING, CHAMFERING)



机械特点

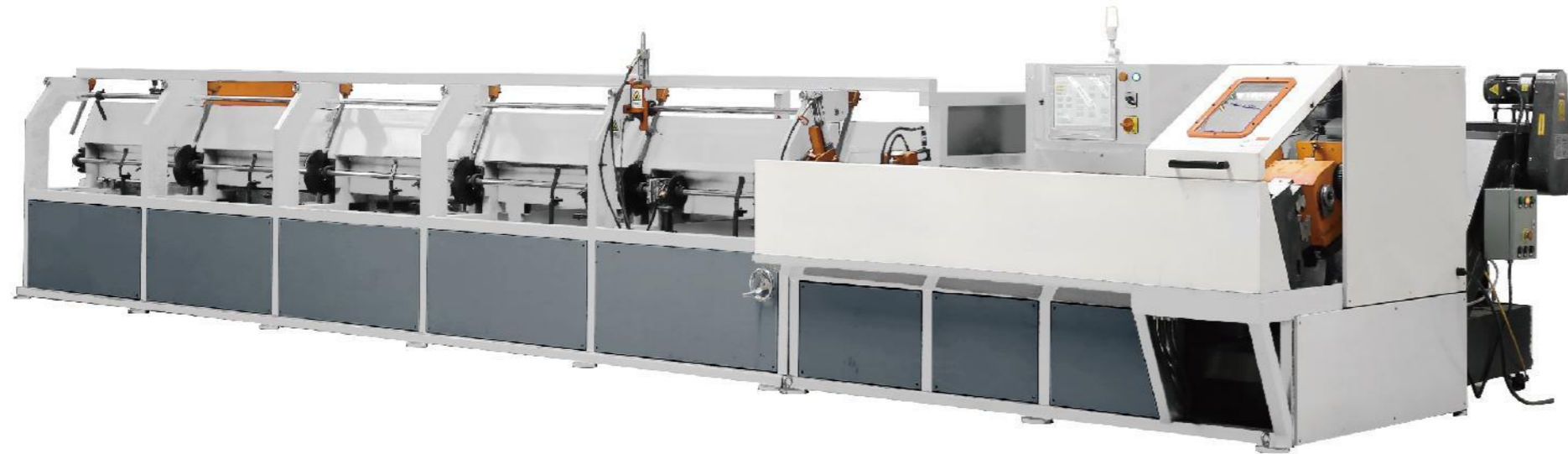
- 自动切管、自动出料，连接双头倒角机，采用智能控制系统，节省人工，提高生产效率。
- 适用于圆管、圆棒，单支或多支自动切割，双头倒角。
- 根据不同的产品要求，专业为用户定制，自动上料架可选配。

Functional features

- Automatic pipe cutting, automatic discharging, connected with double-head chamfering machine, adopting intelligent control system to save labor and improve production efficiency.
- Suitable for round pipe, round bar, single or multiple automatic cutting, double-head chamfering.
- According to different product requirements, professional customization for user needs, automatic feeding rack optional.

全自动管材加工生产线（自动上料、切割、去毛刺）

AUTOMATIC PIPE PROCESSING PRODUCTION LINE (FEEDING, CUTTING, DEBURRING)



机械特点

- 自动化生产线根据用户不同的材料要求配置上料架和机器型号，专业为客户定制。
- 操控采用智能控制系统，真正实现无人化生产。
- 自动上料、切割、自动出料、加装输送带连线（或机械手）、两端刷毛刺连线成一体模式。
- 上料架可选配。适用于圆管、方管、棒材，单支或多支上料。

Functional features

- The automatic production line is equipped with loading rack and machine model according to different material requirements of users, Professional customization for customer needs.
- The intelligent control system is adopted to realize the unmanned production.
- Automatic feeding, cutting, automatic discharging, installation of conveyor belt wire (or manipulator) two end burr brush wire into one mode.
- Feeding rack is optional. Suitable for round pipe, square pipe, bar, single or multiple feeding.

全自动管材加工生产线（自动上料、切割、倒角）

AUTOMATIC PIPE PROCESSING PRODUCTION LINE (FEEDING, CUTTING, CHAMFERING)



机械特点

- 本机一次最多送料1500mm,伺服送料（可根据客户要求定制送料长度）。
- 本机可切割多根管子，一次性切割 $\Phi 25\text{mm}$ 管最少4根。
- 可多次重复送料。
- 本机可通过更换钳口，切割不同管径的钢管（ $\Phi 25-125\text{mm}$ ）。
- 结构及动作说明：管件放置于机台上，自动夹紧，自动送料，自动切割，循环作业。

Functional features

- This machine can feed up to 1500mm at a time, servo feeding (customized feeding length according to customer requirements).
- This machine can cut multiple pipes and cut $\Phi 25\text{mm}$ at least 4 pipes at one time.
- The feeding can be repeated multiple times.
- This machine can cut steel pipes of different pipe diameters ($\Phi 25-125\text{mm}$) by changing the jaws.
- Structure and action description: the pipe fittings are placed on the machine table, automatically clamping, automatically feeding, automatically cutting and cycled.

CNC数控弯管机 CNC PIPE BENDING MACHINE

机械特点

- 弯管采用伺服电机驱动，弯曲角度精度高，具有补偿值。
- 转角及送料为伺服电机驱动，效率高，转角角度及送料精确。
- 特别适用于空间角度多且精度要求高的管件加工。如：汽车油管、空调管、摩托车自行车等车架的生产制作。

Machinery Features

- Bending pipe with servo motor drive, high precise bending angle and compensation value.
- Corner and feeding is driven by servo motor, high efficiency, accurate bending angle and feeding.
- It is very suitable for many spatial angles and high-requirement of precision, E.G. processing for oil tube of car, air conditional tube, frame of bicycle and motorcycle etc.



DW-38CNC-5A-4S



DW-50CNC-4A-3S

CNC数控弯管机 CNC PIPE BENDING MACHINE

机械特点

- 全自动弯管机可对复杂三维管件进行左右弯制。
- 通过5-13轴伺服电机精确控制。
- 可实现1-4层模具左弯和右弯功能。
- 可实现大半径或螺旋状产品弯曲、带推弯功能。
- 工业计算机系统具备3D干涉检查功能。
- 可连接机器人和三维测量仪等。
- 可直接用输入管件数据生成3D立体图，并能模拟管件成型过程，预视管件成形图形。
- 有完善的机器故障报警功能，并在屏幕上显示报警信息，便于操作者查找、排除故障。

Machinery Features

- The CNC bending machine can bend complex three - dimensional pipes left and right.
- The 5-13 axis servo motor controls accurately.
- The left-turn and right-turn functions of 1-4 layer molds can be realized.
- Large radius or spiral products can be bent, with push bending function.
- The computer system for forestry industry has the function of 3D interference inspection.
- The machine can be connected to a robot and a three-dimensional measuring instrument.
- The input pipe fittings data can be directly used to generate 3D stereo images, and can simulate the forming process of the pipes, previewing the pipes forming graphics.
- It has a complete alarm function for machine failure and displays alarm information on the screen, which is convenient for operators to find and troubleshoot.



DW-50CNC-2A-1S



DW-50CNC-3A-1S

CNC数控弯管机 CNC PIPE BENDING MACHINE



DW-50CNC-6A-2S(左右弯)

机械特点

- 全自动弯管机可对复杂三维管件进行左右弯制。
- 通过5-13轴伺服电机精确控制。
- 可实现1-4层模具左弯和右弯功能。
- 可实现大半径或螺旋状产品弯曲、带推弯功能。
- 工业计算机系统具备3D干涉检查功能。
- 可连接机器人和三维测量仪等。

Machinery Features

- The CNC bending machine can bend complex three - dimensional pipes left and right.
- The 5-13 axis servo motor controls accurately.
- The left-turn and right-turn functions of 1-4 layer molds can be realized.
- Large radius or spiral products can be bent, with push bending function.
- The computer system for forestry industry has the function of 3D interference inspection.
- The machine can be connected to a robot and a three-dimensional measuring instrument.



DW-75CNC(左右弯)

CNC数控弯管机 CNC PIPE BENDING MACHINE

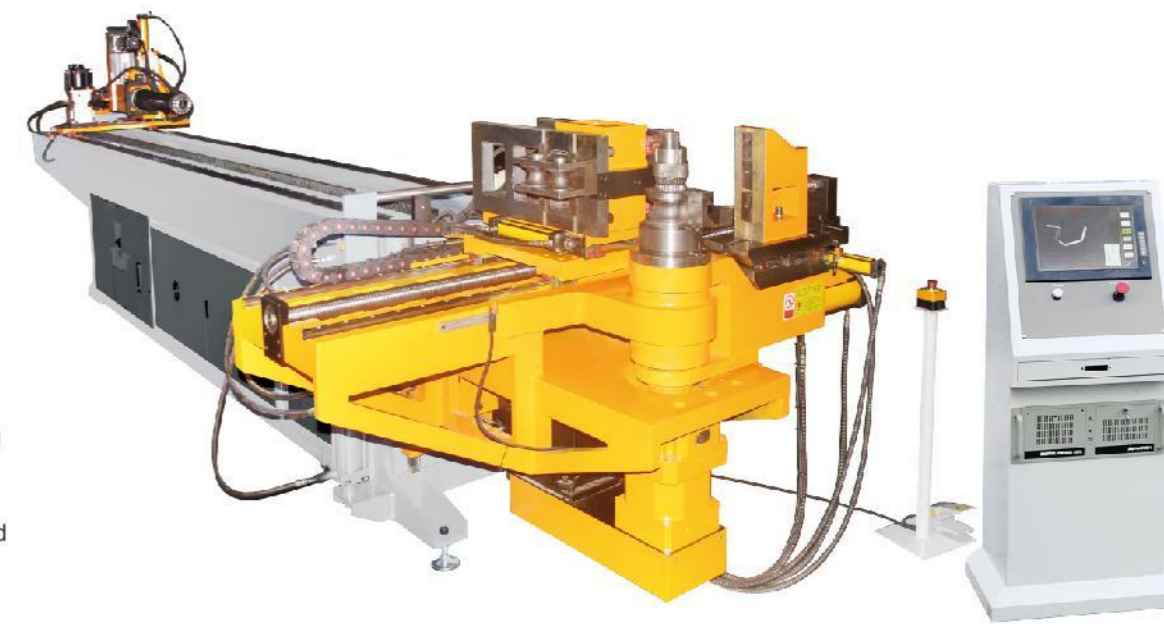


机械特点

- 可直接用输入管件数据生成3D立体图，并能模拟管件成型过程，预视管件成形图形。
- 有完善的机器故障报警功能，并在屏幕上显示报警信息，便于操作者查找、排除故障。

Machinery Features

- The input pipe fittings data can be directly used to generate 3D stereo images, and can simulate the forming process of the pipes, previewing the pipes forming graphics.
- It has a complete alarm function for machine failure and displays alarm information on the screen, which is convenient for operators to find and troubleshoot.



CNC数控弯管机 CNC PIPE BENDING MACHINE

机械特点

- 具自动侦测错误及故障功能,并在荧幕显示,让操作者容易排除障碍。
- 所有加工资料都由触控荧幕输入。
- 每一弯管皆可因不同材质变化设定补偿值、速度、脱模间隙。
- 同一支管子每一弯皆可单独编写5个动作顺序、10段速度,让操作者搭配使用,提高工作效率、降低管件干涉点。



DW-75CNC-4A-2S



DW-89CNC-2A-1S

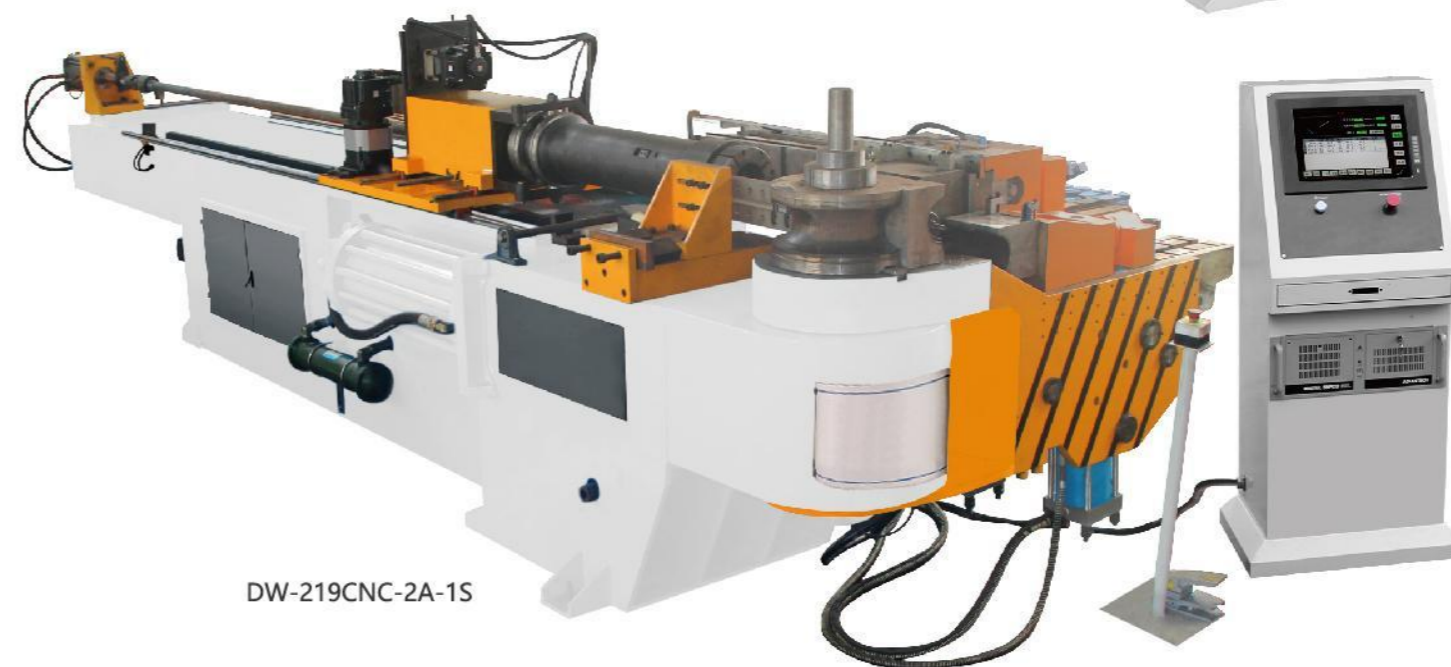
CNC数控弯管机 CNC PIPE BENDING MACHINE

Machinery Features

- With automatic detection error and fault function, and in the screen display, so that the operator can be easy to remove obstacles.
- All processing information by the touching screen input.
- Each bending pipe can set the compensation value, speed, release gap according to different materials.
- A pipe per bending all individually preparing five action sequence and 10 sections of speed, allows the operator to match the use, improve work efficiency, reduce the fitting interference points.



DW-130CNC-2A-1S



DW-219CNC-2A-1S

CNC数控弯管机 CNC PIPE BENDING MACHINE

CNC数控弯管机 CNC PIPE BENDING MACHINE



技术参数	Technical Parameters	单位	DW-18CNC	DW-25CNC	DW-38CNC	DW-50CNC	DW-63CNC	DW-75CNC	DW-89CNC	DW-114CNC	DW-130CNC	DW-168CNC	DW-219CNC	DW-273CNC	DW-325CNC
机型	Model														
最大弯曲管径×壁厚	Max. bending diameter and wall thickness	mm	Φ19.1×1.2	Φ25.1×1.5	Φ39.1×2	Φ51.1×3	Φ65.1×4	Φ76.1×4	Φ90.1×6	Φ120.1×8	Φ133.1×8	Φ169.1×14	Φ220.1×16	Φ275.1×20	Φ325.1×30
最大弯曲半径	Max. bending radius	mm	R120	R160	R180	R250	R250	R300	R300	R450	R450	R600	R800	R800	R1200
最大弯曲角度	Max. bending angle	°	190	190	190	190	190	190	190	190	190	190	190	190	190
最大送料长度	Max. feeding length	mm	1800	2000	2200	2500	3000	3000	3000	3000	3000	3500	4000	4000	5000
送料方式	Feeding mode		直送或夹送	直送或夹送	直送或夹送	直送或夹送	直送或夹送	直送或夹送	直送或夹送	直送或夹送	直送或夹送	直送或夹送	直送或夹送	直送或夹送	直送或夹送
弯管速度	Pipe bending speed	° /s	Max 180	Max 150	Max 150	Max 85	Max 85	Max 40	Max 30	Max 30	Max 30	Max 30	Max 25	Max 25	Max 20
转管速度	Pipe turning speed	° /s	Max 200	Max 200	Max 200	Max 200	Max 200	Max 160	Max 160	Max 160	Max 160	Max 160	Max 80	Max 80	Max 60
送料速度	Feeding speed	mm/s	Max 1000	Max 1000	Max 1000	Max 1000	Max 1000	Max 800	Max 800	Max 800	Max 800	Max 800	Max 600	Max 500	Max 500
弯管精度	Pipe bending precision	°	±0.1	±0.1	±0.1	±0.1	±0.1	±0.1	±0.1	±0.1	±0.1	±0.1	±0.2	±0.2	±0.2
转管精度	Pipe turning precision	°	±0.1	±0.1	±0.1	±0.1	±0.1	±0.1	±0.1	±0.1	±0.1	±0.1	±0.1	±0.1	±0.1
送料精度	Feeding precision	mm	±0.1	±0.1	±0.1	±0.1	±0.1	±0.1	±0.1	±0.1	±0.1	±0.1	±0.1	±0.1	±0.1
资料输入方式	Data entering mode		1、坐标 (X.Y.Z) 2、工作值 (Y.B.C)												
弯管方式	Pipe bending mode		伺服弯管:1kw	伺服弯管:2kw	伺服弯管:3kw	1、伺服弯管:5kw(三轴以上) 2、液压弯管									
转管伺服电机功率	Pipe turning servo motor power	kw	0.2	0.4	0.75	0.75	0.75	1	1.5	2	2	3	3	3	7
送料伺服电机功率	Feeding servo motor power	kw	0.4	0.75	1	1.5	1.5	1.5	2	3	3	4	5	7	11
管件允许弯头数	Number of pipe bending		1、16件 (PLC型) 2、33件 (工业电脑型)												
可储存零件数	Storing part number		1、1000组 (PLC型) 2、两百万组 (工业电脑型)												
油压电机功率	Hydraulic motor power	kw		4	4	5.5	5.5	7.5	11	22	22	30	35	35	55
系统最大压力 (可调)	Max. system pressure (adjustable)	Mpa	10	12	12	12	12	12	14	14	14	14	14	14	14
机器重量	Machine weight	kg	1200	1300	1500	2500	3000	4500	5500	6800	7800	12000	22000	25000	38000

本公司保留产品更改权, 所有产品技术及外观如有变动, 恕不另行通知。
Company reserves the right of changing the above technical specification without any obligation.

单头液压弯管机 SINGLE HEAD HYDRAULIC PIPE BENDING MACHINE



DW-38NC

机械特点

高性能中型弯管机，运用NC控制，多组程序、多角度设定，使您的操作及程式设置更简便。使用广泛，可用于大量生产或标准化的产品，如排气管、座椅、保险杠及所有钢家具等。

Machinery Features

High performance medium-sized pipe bending machine is controlled by NC with multigroup procedures and multi-angles setting. It will make you operate and set more easily. It is widely used in larger standard products, E.G. exhaust pipe, seat, bumper, all steel furniture and etc.



DW-50NC

单头液压弯管机 SINGLE HEAD HYDRAULIC PIPE BENDING MACHINE



DW-63NC

机械特点

- 大中型弯管机型，多次助推设计，解决大半径、大角度、薄壁弯管的难题。
- 采用单片机控制形式触摸式操作面板，人、机对话式操作，方便灵活。
- 弯曲角度采用编码器跟踪并反馈信息，弯曲精度高。
- 具有自动记数和停电记忆功能。
- 配备水冷却系统，保证机器长时间稳定工作。

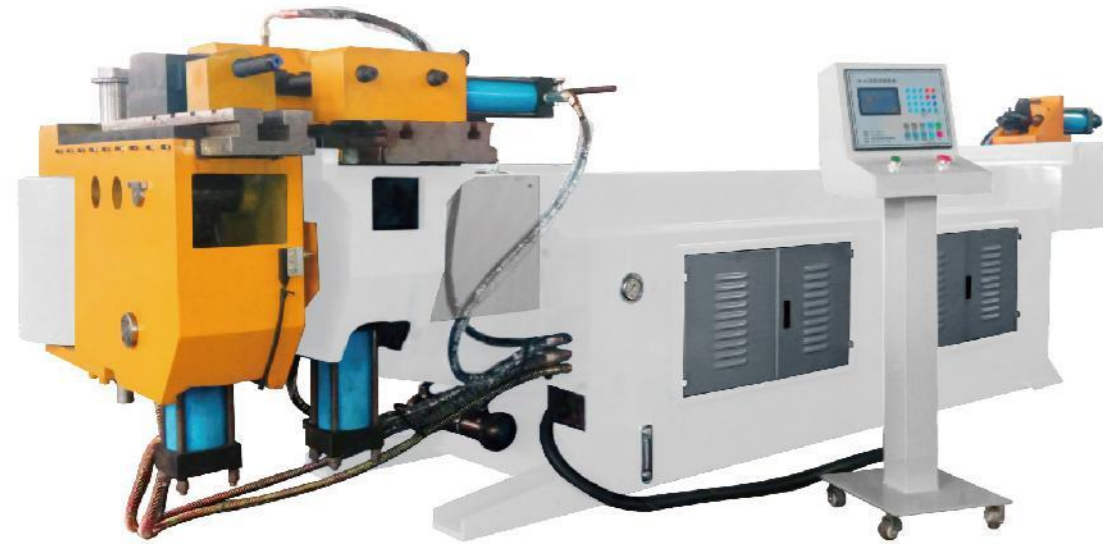
Machinery Features

- Large and medium-sized pipe bending machine with boosting design, can solve the trouble of big radius, big angle and thin bending pipe.
- Adopting touched operation panel by single chip computer control, man-machine conversation operating, very convenient.
- The angle of bending uses encoder tracking and give a feedback with a high bending precision.
- With automatic counting and power-off memory function.
- Equipped with water cooling system to ensure the stability of the machine for a long time.



DW-75NC

单头液压弯管机 SINGLE HEAD HYDRAULIC PIPE BENDING MACHINE



DW-130NC

机械特点

- 机器造型美观、精巧，提供了最大弯管空间。
- 采用单片机控制，设置操作简单易懂。
- 弯曲角度采用编码器跟踪并反馈信息，弯曲角度高精度。
- 存储多组加工模式，不同规格程序之间灵活切换。
- 具有自动记数和停电记忆功能。
- 配备液压冷却系统，保证机器长时间稳定工作。

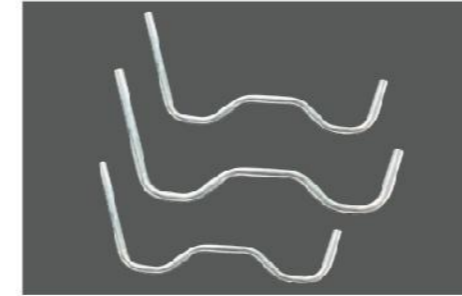
Machinery Features

- Machine is beautiful and delicate, and provides the space for the biggest bending pipe.
- Adopting single chip microcomputer control, easy to operate.
- The angle of bending uses encoder tracking and give a feedback with a high bending precision.
- Storing of multiple sets of processing mode, flexible switching between different specifications.
- With automatic counting and power-off memory function.
- Equipped with hydraulic cooling system to ensure the stability of the machine.



DW-219NC

单头液压弯管机 SINGLE HEAD HYDRAULIC PIPE BENDING MACHINE



技术参数	Technical Parameters	单位	DW-38NC	DW-50NC	DW-63NC	DW-75NC	DW-89NC	DW-114NC	DW-130NC	DW-168NC	DW-219NC	DW-273NC	DW-325NC
最大弯曲管径×壁厚	Max. bending diameter, wall thickness	mm	Φ38×2	Φ50×3	Φ63×4	Φ75×4	Φ89×6	Φ114×8	Φ130×8	Φ168×14	Φ219×16	Φ273×20	Φ325×30
最大弯曲半径	Max. bending radius	mm	R260	R350	R350	R400	R450	R520	R520	R750	R800	R1000	R1200
最小弯曲半径	Min. bending radius	mm	R≥1.5D	R≥1.5D	R≥1.5D	R≥1.5D	R≥1.5D	R≥1.5D	R≥1.5D	R≥1.5D	R≥1.5D	R≥1.5D	R≥1.5D
最大弯曲角度	Max. bending angle	°	190	190	190	190	190	190	190	190	190	190	190
标准穿芯长度	Standard core length	mm	1600	2200	2600	2800	3500	4500	4500	5000	6000	7000	8000
控制系统	Control system		微电脑控制	微电脑控制	微电脑控制	微电脑控制	微电脑控制	微电脑控制	微电脑控制	微电脑控制	微电脑控制	微电脑控制	微电脑控制
管件允许弯头数	Number of pipe bending	件	16	16	16	16	16	16	16	16	16	16	16
可储存零件数	Can store part number	组	16×16	16×16	16×16	16×16	16×16	16×16	16×16	16×16	16×16	16×16	16×16
油压电机功率	Oil-pressure motor power	kw	4	5.5	5.5	7.5	11	22	22	22	30	35	40
系统最大压力	Max. system pressure	Mpa	12	12	12	12	14	14	14	16	16	16	16
液压系统控制	Hydraulic system control		电磁阀	电磁阀	电磁阀	电磁阀	电磁阀	电磁阀	电磁阀	电磁阀	电磁阀	电磁阀	电磁阀
油箱容积	Fuel tank volume	L	110	150	220	250	260	350	400	650	800	1000	1200
机床外形尺寸	Machine dimension	mm	2600×600×1000	3000×700×1000	3200×750×1100	4000×1000×1100	4320×1300×1200	5700×1300×1600	5700×1600×1300	7100×1800×1500	8800×2450×1980	9000×2500×2000	10000×2800×2500
机床重量	Machine weight	kg	750	1220	1500	2000	3500	7000	8000	12000	20000	22000	36000

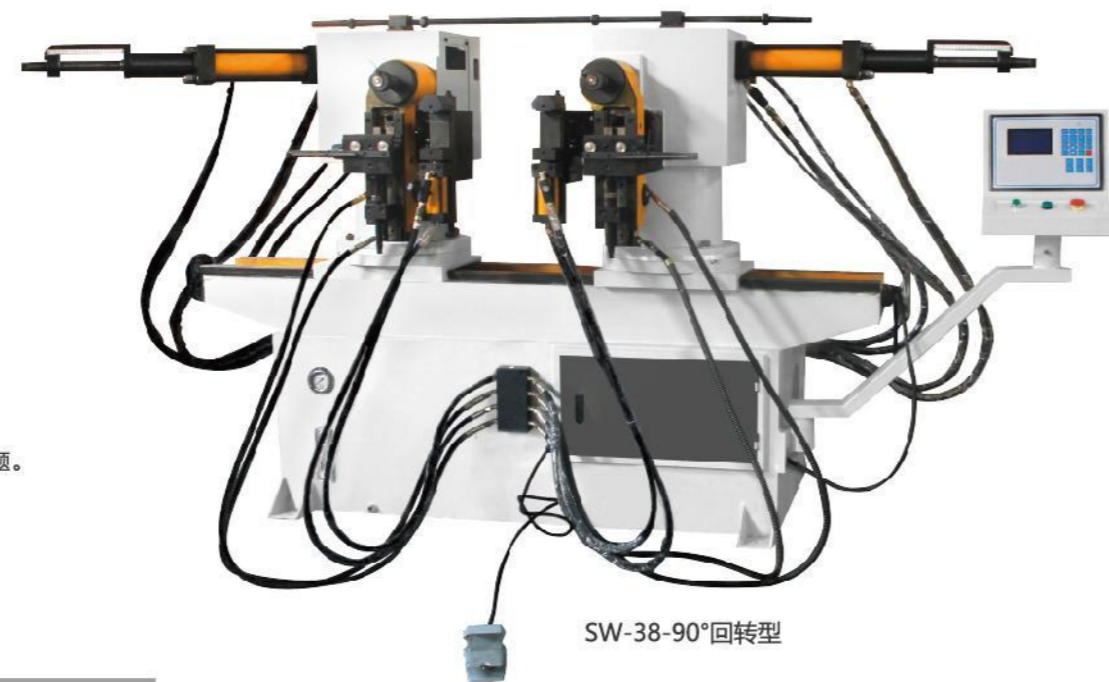
本公司保留产品更改权，所有产品技术及外观如有变动，恕不另行通知。
Company reserves the right of changing the above technical specification without any obligation.

双头弯管机 DOUBLE-HEAD PIPE BENDING MACHINE



机械特点

- 根据底座结构不同分为标准型与回转型
 - a. 标准型: 机头不可回转, 双头从0-90° 皆可任意调整。
 - b. 回转型: 机头可回转, 双头可任意调整弯管角度从0-185°, 但必须考虑取料问题。
- 采用PLC控制, 方便操作, 易于维护。
- 可分全循环, 半循环, 选择操作。
- 可依不同材料外径, 依其大小选择1支或1支以上的操作。
- 标准配件: 模具一组、挡尺一组。



SW-38-90°回转型

Machinery Features

- According to the base structure of the different types of standard and rotary type
 - a. Standard type: head can not be turned, double headed from the 0-90° can be arbitrary adjustment.
 - b. Rotary type: head can be turned, double-head adjustable bend angle from the degree 0-185°, but must consider the problem of reclaiming.
- Adopting PLC control, easy operation, easy to maintain.
- It can be divided into the whole cycle, half cycle for the choice of operation.
- According to the size of different materials, you can choose one or more than one operation.
- Standard accessories: a group of mold a group of ruler.

本公司保留产品更改权, 所有产品技术及外观如有变动, 恕不另行通知。
Company reserves the right of changing the above technical specification without any obligation.

管端成型机 PIPE END FORMING MACHINE



单头



双头

机械特点

管端成形机, 运用直线导轨为载体, 使之运作无磨损, 产品重复性好, 适用于铁管、家具、汽车空调、燃油管路等的端头处理。

Machinery Features

Pipe end forming machine, with the straight line guide rail as the carrier, to run without abrasion, good repeatability of products applicable to the pipe end processing of iron pipe, furniture, automobile air conditioner, fuel.

技术参数 Technical Parameters

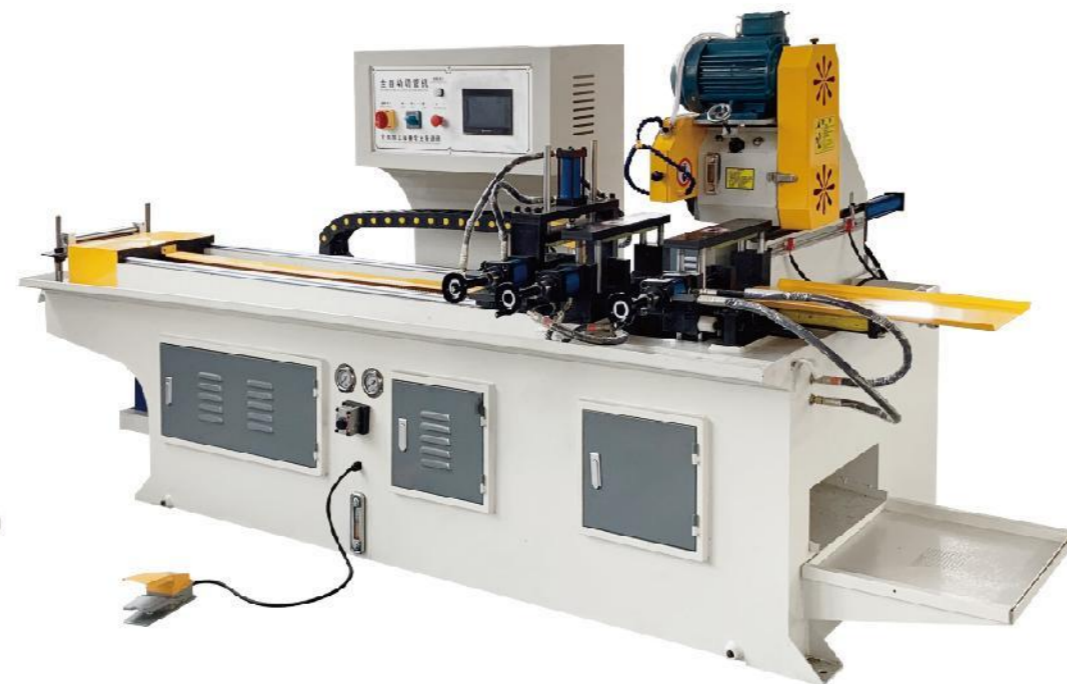
机型	Model	TM-40	TM-60	TM-80	TM-100	TM-120
最大适用管件	Maximum fitting	Φ40 × 2.0t	Φ60 × 2.0t	Φ80 × 2.0t	Φ100 × 2.0t	Φ120 × 2.0t
最大工作行程	Maximum working stroke	100mm	130mm	150mm	150mm	150mm
油压出力	Oil pressure output	4.5Mpa	12Mpa	12Mpa	14Mpa	14Mpa
工作速度	Working speed	100mm in 3-4sec	100mm in 3-4sec	130mm in 5-6sec	140mm in 6-7sec	140mm in 8-9sec
机器尺寸	Machine size	2000 × 550 × 1300mm	2000 × 600 × 1400mm	2900 × 700 × 1400mm	3000 × 750 × 1500mm	3500 × 900 × 1800mm
机器重量	Machine weight	1100kg	1250kg	1600kg	1800kg	2500kg

本公司保留产品更改权, 所有产品技术及外观如有变动, 恕不另行通知。
Company reserves the right of changing the above technical specification without any obligation.

金属圆锯机 (CNC型) FULL AUTOMATIC METAL CIRCULAR SAWING MACHINE

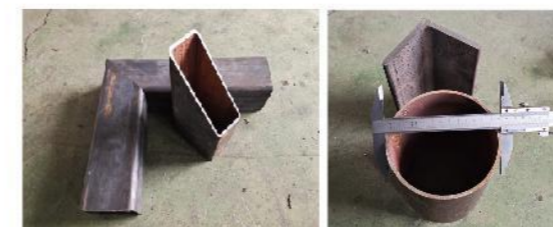


KX-450CNC (伺服进刀)



KX-450CNC (横切)

金属圆锯机 (CNC型) FULL AUTOMATIC METAL CIRCULAR SAWING MACHINE



KX-450CNC (伺服转角)



金属圆锯机 (CNC型) *FULL AUTOMATIC METAL CIRCULAR SAWING MACHINE*



KX-350CNC (左右夹)



KX-350CNC (上下夹)

金属圆锯机 (CNC型) *FULL AUTOMATIC METAL CIRCULAR SAWING MACHINE*



KX-450CNC (左右夹)



KX-450CNC (上下夹)

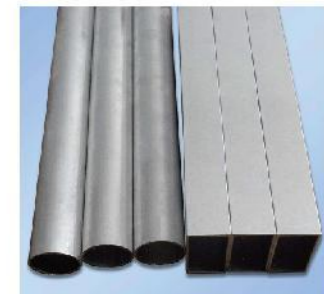
金属圆锯机 (CNC型) FULL AUTOMATIC METAL CIRCULAR SAWING MACHINE

机械特点

- 垂直滑道进刀, 机台结构坚固, 切屑集中处理, 自动润滑, 独立刀片冷却, 独立油冷却。
- 本机有三组夹紧装置, 压力大小分别可调, 有效解决夹紧时材料不牢或变形的问题。
- 本机有拉尾料功能, 有效节约材料长度。
- 本机采用伺服驱动送料, 大大提高锯切精度。
- 本机采用触屏输入, PLC处理数据, 配合各执行部件, 简单易操作。
- 本机系统具备无料停机、故障检测与显示功能, 方便检修、维护。
- 本机具备一种材料切割出多种长度的功能。

Machinery Features

- Vertical slide feeding, strong structure, concentrate on processing of cutting chip, automatic lubrication, blade cooling, oil cooling.
- The machine has three sets of clamping device, the pressure size were adjustable, effectively solve the material when the clamping is not strong or deformation of the problem.
- The machine has a pull tail material function, effectively saving material length.
- The machine adopts servo drive feed, greatly improve the sawing accuracy.
- The machine adopts touch-screen input, PLC processing data, with the implementation of the components, easy to operate.
- The system has no material shutdown, fault detection and display function, easy maintenance, maintenance.
- The machine has a function of cutting out a variety of lengths.



技术参数	Technical Parameters				
机型	Model	KX-350CNC(上下夹)	KX-350CNC(左右夹)	KX-450CNC(上下夹)	KX-450CNC(左右夹)
锯片驱动马达	Blade drive motor	3.0/4.0kw 380V/50HZ	3.0/4.0kw 380V/50HZ	3.0/4.0kw 380V/50HZ	3.0/4.0kw 380V/50HZ
锯片转速	Blade rotational speed	60/120RPM	60/120RPM	60/120RPM	60/120RPM
送料行程	Feed stroke	1500mm/次	1500mm/次	1500mm/次	1500mm/次
伺服电机功率	Servo motor power	1000w	1000w	1000w	1000w
拉尾料行程	Pull tail stroke	150mm	150mm	150mm	150mm
夹钳型式	Clamp type	上下	左右	上下	左右
冷却泵马达	Cooling pump motor	90w	90w	90w	90w
液压泵马达	Hydraulic pump motor	2.2kw	2.2kw	2.2kw	2.2kw
液压工作压力	Oil working pressure	10-50kg	10-50kg	10-50kg	10-50kg
机器尺寸	Dimension	3500 × 1100 × 1700mm	3500 × 1100 × 1700mm	3500 × 1100 × 1700mm	3500 × 1100 × 1700mm
机器重量	Weight	1350kg	1350kg	1350kg	1350kg

技术参数	Technical Parameters				
锯切能力 (碳钢)	机型	KX-350CNC(上下夹)	KX-350CNC(左右夹)	KX-450CNC(上下夹)	KX-450CNC(左右夹)
	刀片位置	90° 正切	90° 正切	90° 正切	90° 正切
	○	φ90mm	φ90mm	φ120mm	φ120mm
	□	80 × 80mm	90 × 90mm	100 × 100mm	100 × 100mm
	□	80 × 80mm	90 × 90mm	100 × 100mm	100 × 100mm
	└	60 × 80mm	60 × 80mm	110 × 50mm	110 × 50mm
	■	20 × 20mm	20 × 20mm	40 × 40mm	40 × 40mm
	●	φ25mm	φ25mm	φ40mm	φ40mm

本公司保留产品更改权, 所有产品技术及外观如有变动, 恕不另行通知。
Company reserves the right of changing the above technical specification without any obligation.

金属圆锯机 (半自动型) SEMI-AUTOMATIC METAL CIRCULAR SAWING MACHINE



MC-275B (气动)

MC-315B (气动)

MC-315Y (油压)

MC-350Y (油压)

MC-425Y (油压)

机械特点

- 垂直滑道进刀式, 进刀稳定刀具寿命长。
- 特殊设计, 多组齿轮传动适合重型切削, 精度稳定。
- 机台结构坚固, 振动小, 机器寿命长。
- 冷却液自动循环确保工件切面平滑。
- 切屑集中处理, 维护简单容易。

Machinery Features

- Vertical slide feed type, feed stable and have long tool life.
- Special design, multiple sets of gear transmission is suitable for heavy cutting, precise stability.
- The machine structure is firm with small vibration.
- The cooling liquid automatic cycle to ensure that the workpiece surface smooth.
- Chip processing, maintenance is simple and easy.

主要技术参数 Main Technical Parameters

机型 Model	MC-275B (气动)		MC-315B (气动)		MC-315Y (油压)	
锯切能力 (碳钢)	90° 正切	45° 斜切	90° 正切	45° 斜切	90° 正切	45° 斜切
	○	φ70mm	φ60mm	φ90mm	φ70mm	φ90mm
	□	60 × 60mm	45 × 45mm	80 × 80mm	60 × 60mm	80 × 80mm
	└	60 × 40mm	40 × 30mm	80 × 60mm	60 × 40mm	80 × 60mm
	□	60 × 40mm	40 × 30mm	80 × 60mm	60 × 40mm	80 × 60mm
	●	φ20mm	φ20mm	φ20mm	φ20mm	φ20mm
	■	20 × 20mm	20 × 20mm	20 × 20mm	20 × 20mm	20 × 20mm

本公司保留产品更改权, 所有产品技术及外观如有变动, 恕不另行通知。
Company reserves the right of changing the above technical specification without any obligation.

半自动铝型材切割机 SEMI-AUTOMATIC ALUMINIUM PROFILE CUTTING MACHINE



455Q型

610Q型 (横切)

Machinery Features

- 455Q for the latest design and improvement of the traditional structure, using a sliding rail mechanism and stable movement of the spindle mechanism to strengthen.
- Spindle feed and back knife is very stable, working table is not easy to shake. The blade cutting route is not easy to micro change.
- Smooth surface, high precision, hidden type saw blade, upper and lower parts is safe and reliable; pedal switch, full automatic feeding and cutting.
- Automatic oil injection lubrication, cooling, action without burr, saw more durable.
- Single or multiple cutting is suitable for a small number of processing, more suitable for mass processing with high efficiency and low cost.

- 610Q To improve the traditional structure of the latest design, the use of the saw blade cutting line.
- Adopting linear guide, higher accuracy.
- Pneumatic semi-automatic type.
- Adopting tungsten steel saw blade, cross cutting aluminum profile cutting machine is a specialized saw cutting aluminum and aluminum products metal circular saw machine, sawing after incision is smooth and there is no need to be processed, are widely used in automobile industry, furniture industry and radiator industry.
- This machine has simple operation, small noise, no pollution, no burr, good aluminum cutting quality, high production efficiency.

机械特点

- 455Q为改良传统结构的最新设计, 使用滑轨式机构及加强稳固主轴运动的机构。
 - 主轴进刀及回刀时极稳定, 工作不易震动, 锯片切削路线不易微变。
 - 表面光洁, 精度高; 隐藏式锯片, 上下工件安全可靠; 脚踏式开关, 压料锯料全自动。
 - 自动喷油润滑、冷却, 切面无毛刺, 锯片更耐久。
 - 一次可单支或多支锯切, 适合多样小量加工, 更适合大批量加工, 效率高, 费用低。
- 610Q型 (横切) 改良传统结构的最新设计, 锯片使用走向式切削路线。
 - 采用直线导轨, 精度更高。
 - 气压半自动型。
 - 使用钨钢锯片, 610Q横切铝型材切割机是一种专门锯切铝型材及铝制品的金属圆锯机, 锯切后切口光滑无需再加工, 广泛应用于汽车业、家具业以及散热器行业。
 - 本机具有操作简单、噪音小、无污染、无毛刺、铝切品质好、生产效率高。

主要技术参数 Main Technical Parameters

机型	Model	455Q
铝切角度	Aluminum cutting angle	90° & 45°
最大锯切宽度	Maximum cutting width	300mm
最大锯切厚度	Maximum cutting thickness	125mm
主轴转速	Spindle speed	3500r/min
电机功率	Motor power	4kw
机型	Model	610Q (横切)
锯切长度	Cutting length	10~1200mm
主电机功率	Main motor power	4kw
使用锯片尺寸	Saw blade size	Φ610 × Φ25.4 × 100T
锯片进给速度	Saw feed rate	0~3m/min
自动进刀最高速度	Automatic feed speed	10m/min
锯切(宽度 × 高度)	Sawing (W × H)	500 × 225mm
主电机转速	Speed of main motor	2850r/min
外形尺寸(长 × 宽 × 高)	Overall size (L × W × H)	2100 × 810 × 1250mm
锯片返回速度	Saw blade return speed	2~3m/min

本公司保留产品更改权, 所有产品技术及外观如有变动, 恕不另行通知。
Company reserves the right of changing the above technical specification without any obligation.

全自动铝型材切割机 FULL AUTOMATIC ALUMINIUM PROFILE CUTTING MACHINE



LQ-455CNC

机械特点

- 主要用于工业型材、铝合金门窗、散热片、铜材等锯切, 亦可用于塑料型材的切割下料。
- 使用硬质合金锯片, 外径可达18", 线速度高, 加工精度高。
- 本机床带数控送料系统, 并可根据客户要求加装托料架。
- 采用日本三菱伺服电机, 滚珠丝杠和进口导轨, 因而重复切削精度高, 电机功率为4kw, 更适合工业型材, 铜材铝棒的切割。

Machinery Features

- Mainly used cutting for industrial profiles, aluminum alloy doors and windows, heat sink, copper, can also be used for cutting and baiting of plastic profile.
- Adopting hard alloy saw blade, diameter up to 18" with high line speed and high processing precision.
- The machine tool with CNC feeding system, and according to customer requirements of the installation of supporting rack.
- Adopting the Japanese MITSUBISHI servo motor, ball screw and imported rails, and repeated cutting with high precision, more suitable for industrial profiles, copper aluminum bar cutting.

主要技术参数 Main Technical Parameters

机型	Model	LQ-455CNC
伺服电机	Servo motor	1kw
主电机功率	Main motor power	4kw
使用锯片尺寸	Saw blade size	Φ455 × Φ25.4 × 120T
锯片进给速度	Saw feed rate	0~3m/min
工作电压	Working voltage	380V
自动送料最高速度	Automatic feed speed	10m/min
锯切(宽度 × 高度)	Sawing (W × H)	300 × 125mm
主电机转速	Speed of main motor	2850r/min
外形尺寸(长 × 宽 × 高)	Overall size (L × W × H)	2200 × 900 × 1600mm
锯片返回速度	Saw blade return speed	2~3m/min
工作气压	Working pressure	0.6~0.8Mpa
机床重量	Weight of machine tool	1000kg

本公司保留产品更改权, 所有产品技术及外观如有变动, 恕不另行通知。
Company reserves the right of changing the above technical specification without any obligation.

全自动铝型材切割机 FULL AUTOMATIC ALUMINIUM PROFILE CUTTING MACHINE



LQ-360ZC

主要技术参数 Main Technical Parameters

机型	Model	LQ-360ZC			
锯切能力	Saw cutting ability	● Φ80mm	□ 110×110mm	▭ 110×90mm	○ Φ110mm
送料长度	Feeding length	无间断连续送料 Continuous feeding			
进刀速度	Feed speed	无段调整 Continuous adjustment			
主机马达	Host motor	4或5.5kw, 依订单装置 4 or 5.5kw, optional			
锯片	Saw blade	Φ355mm碳化钨锯片 Φ350mm高速钢锯片	Φ355mm tungsten carbide blade Φ350mm high speed steel blade		
主轴转速	Spindle speed	2850RPM或依订单装置 2850RPM or according to order			
冷却方式	Cooling mode	强置水冷或油雾冷却 Water cooling or oil mist cooling			
压缩空气	Compressed air	0.6Mpa, 2500NL/min 0.6Mpa, 2500NL/min			
机器尺寸	Machine size L×W×H	1900×1300×1650mm 1900×1300×1650mm			
总重量	Total weight	1200kg 1200kg			

本公司保留产品更改权, 所有产品技术及外观如有变动, 恕不另行通知。
Company reserves the right of changing the above technical specification without any obligation.



机械特点

- 机械主电路采用台湾进口PLC控制工作, 操作集中简易、灵敏, 维修方便。
- 自动送料, 无间断送料采用台湾“富士”伺服电机.精密丝杆、切割精度达到±0.03mm。
- 计数器可设置加工数量或自动停机或累计当天工作量。
- 前后压力可无段调整, 确保工件无夹伤不变形。
- 加工尺寸变更时, 无需手动硬件定位, 只需在文本显示器上改动相关尺寸数据即可工作。
- 针对铝型材、铜材、有机材料、塑钢性材料、碳纤等有显著效果, 切割无毛刺, 对切割后的屑沫集中回收, 冷却液能循环使用, 具有高效、省时、省料的特点。

Machinery Features

- The mechanical main circuit uses imported PLC control. The operation is simple, sensitive with convenient maintenance.
- Automatic feeding, no end material adopts the imported servo motor and precise screw, cutting accuracy is high, up to ±0.03mm.
- The counter can be set to the number of processing or automatic shutdown or cumulative day of work.
- Before and after the pressure stepless adjustment, ensure the workpiece without crush deformation.
- When Processing size changing, no need to manually hardware positioning, only in the text display to change the relevant size data can work.
- For aluminum, copper, organic materials, plastic materials, such as carbon fiber has obvious effect, without burr cutting, centralized recovery after cutting of foam debris, can recycle cooling liquid, which has the advantages of high efficiency, saving time and material.

单头倒角机 SINGLE HEAD CHAMFERING MACHINE



60DT-Q



80DT-Q/Y



120DT-Y

机械特点

- 半自动精密型倒角, 人工进料、自动夹钳、自动进退刀。
- 夹模与刀盘经过精巧的设计, 确保加工物件与刀盘的中心线准确不变。可以一次均匀地完成管端的外角, 内角及管端的加工。
- 利用皮带轮的变化可转换多个转速, 适应各种不同材质的金属材料, 取得最长的刀具寿命。

Machinery Features

- Manual feeding, automatic clamping pliers, automatic retracting knife.
- Clamping die and knife plate after a delicate design, to ensure that the machining of the center line of the cutter and the center line of the same. Can a uniform completion pipe end corners, angles and pipe end processing.
- The use of belt round of changes can be converted to a variety of different speed, to adapt to a variety of different materials of metal materials, the longest tool life.

主要技术参数 Main Technical Parameters

机型	Model	60DT-Q	80DT-Q/Y	120DT-Y
加工直径范围(管材)	Machining diameter range (pipe)	Φ6-60mm 壁厚≤4mm	Φ10-80mm 气动; 壁厚≤4mm 液压; 壁厚≤10mm	Φ20-120mm 气动; 壁厚≤5mm 液压; 壁厚≤12mm
加工直径范围(棒材)	Machining diameter range (bar)	Φ6-30mm	Φ10-30mm	Φ20-120mm
加工长度	Processing length	50mm以上	50mm以上	60mm以上
马达规格	Motor specification	220V单相(定做)380V三相(标准)0.75kw电机	380V三相(标准)1.5kw电机	380V三相(标准)2.2/4.0kw 电机
适用材质	Suitable material	铜管、铁管、铝管	钢管、铜管、铁管、铝管、不锈钢管	钢管、铜管、铁管、铝管、不锈钢管
主轴转速	Spindle speed	800-1400rpm	800-1400rpm	650-1000rpm
高速1400rpm	High speed 1400rpm	铝管、红铜管	铝管、红铜管	铝管、红铜管
低速800rpm	Low speed 800rpm	钢管、铁管、硬质铜管、不锈钢管	钢管、铁管、硬质铜管、不锈钢管	钢管、铁管、硬质铜管、不锈钢管

本公司保留产品更改权, 所有产品技术及外观如有变动, 恕不另行通知。
Company reserves the right of changing the above technical specification without any obligation.

双头倒角机 DOUBLE-HEAD CHAMFERING MACHINE



60YW-Y (短料)



80YW-Y (短料)

机械特点

- 自动送料、自动夹钳、自动进退刀。
- 两段进刀速度节省工时，且慢速易于调整，加工完美。

Machinery Features

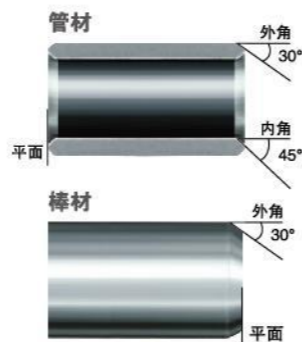
- Automatic feeding, automatic clamping pliers, automatic retracting knife.
- Two-section feeding speed can save time and it is easy to adjust and process perfectly.



主要技术参数 Main Technical Parameters

机型	Model	60YW-Y (短料)	80YW-Y (短料)
加工直径范围 (管材)	Machining diameter range (pipe)	φ15-60mm 壁厚≤10mm	φ20-85mm 壁厚≤12mm
加工直径范围 (棒材)	Machining diameter range (bar)	φ15-30mm	φ20-32mm
加工长度	Processing length	30-180mm	30-180mm
马达转速	Motor speed	2HP×4P 1400rpm	2HP×4P 1400rpm
适合材质	Suitable for material	钢管、铁管、不锈钢管、铝管、铜管等各种管材及棒材	钢管、铁管、不锈钢管、铝管、铜管等各种管材及棒材
机械标准附件	Mechanical standard accessories	1、标准倒角刀盘1组 2、夹具1组	1、标准倒角刀盘1组 2、夹具1组
油压	Oil pressure	4-6Mpa	4-6Mpa
工作电压	Working voltage	380V(三相四线) 50Hz	380V(三相四线) 50Hz
特点	Characteristics	针对长度较短壁厚较厚且精度要求较高的产品，长度加工精度可达±0.05mm	

本公司保留产品更改权，所有产品技术及外观如有变动，恕不另行通知。
Company reserves the right of changing the above technical specification without any obligation.



双头倒角机 DOUBLE-HEAD CHAMFERING MACHINE



50WD-Q 卧式长料 (气动)



50WD-Q 卧式长料 (气动)



50WD-Y 卧式长料 (液压)



60BL-1500 板链式上料机



主要技术参数 Main Technical Parameters

机型	Model	50WD-Q/Y (长料)
主机马达	Main engine motor	0.75kw×4P
加工能力	Processing capacity	管径φ8-φ50mm, 圆棒外角φ8-φ30mm
壁厚	Wall thickness	气动: ≤4mm 液压: ≤8mm
加工长度	Processing length	80-580mm, 可选装, 最长可选装至2000mm
标准配置	Standard configuration	标准刀头一个, 夹具一组
机台重量	Machine weight	650kg
机台尺寸	Machine size	1685×850×820mm
特点	Characteristics	针对长度较长重量较轻的管材, 长度加工精度可达±0.1mm

本公司保留产品更改权，所有产品技术及外观如有变动，恕不另行通知。
Company reserves the right of changing the above technical specification without any obligation.

主要技术参数 Main Technical Parameters

机型	Model	60BL-1500 板链式上料机	50TB-550 推板式上料机
上料直径	Feeding diameter	φ10-60mm	φ10-50mm
上料长度	Feeding length	180-1500mm	35-500mm
特点	Characteristics	上料速度快, 适合长度较长的捆料	适合长度较短的物料, 可整框倒入料仓内不需人工整齐摆放

本公司保留产品更改权，所有产品技术及外观如有变动，恕不另行通知。
Company reserves the right of changing the above technical specification without any obligation.



50TB-550 推板式上料机

管材加工生产线 (自动上料、倒角)

PIPE PROCESSING PRODUCTION LINE (FEEDING, CHAMFERING)



机械特点

- 自动化生产线根据用户不同的材料要求配置上料架和机器型号, 专业为客户定制。
- 操控采用智能控制系统, 节省人工, 提高生产效率。
- 自动上料、自动出料或加装输送带连线。
- 上料架可选配。适用于圆管、棒材, 单支或多支上料。

Functional features

- The automatic production line is equipped with loading rack and machine model according to different material requirements of users, Professional customization for customer needs.
- Intelligent control system is adopted to save labor and improve efficiency.
- Automatic feeding, automatic discharge or installation of conveyor belt connection.
- Feeding rack is optional. Suitable for round pipe, bar, single or multiple feeding.

封口机 SEALING MACHINE



滚圆机 ROUND ROLLING MACHINE



冲弧机
ARC PUNCHING MACHINE



任意角度切铝机
ALUMINUM CUTTING MACHINE

