

***MI HARTING***<sup>®</sup>

Anhui Harting Machinery Technology Co., Ltd

# Harting Product Catalogue

China Sheet Metal Processing Equipment Manufacturer and  
Supplier

ADDRESS : BOWANG DISTRICT, MAANSHAN CITY, ANHUI PROVINCE  
WEBSITE : [WWW.MIHATING.COM](http://WWW.MIHATING.COM)  
WHATSAPP : +86 189 4958 9551  
EMAIL : [ALBERT@MIHATING.COM](mailto:ALBERT@MIHATING.COM)

## About us

# Anhui Harting Machinery Technology Co.,LTD

Anhui Harting Machinery Technology Co.,LTD is a professional manufacturer and exporter in China dedicated to the development, production and sales of high quality sheet metal processing equipment, founded in 2012. The company's factory is located in Bowang District, Ma'anshan, Anhui Province, which is known as "the first town of China's die-cutting machine tools" and is only 30 kilometers away from Nanjing Lukou International Airport and close to the Yangtze River Delta economic zone of China. The foreign trade center is located in Wuhu City, Anhui Province, with convenient transportation and superior location. Harting Machinery has three factories, the first factory produces forging machine tools, the second factory produces ventilation ducting equipment and the third factory produces bending machine tools, shearing machine blades and other machine tools. The total area of the factory is 60,000 square meters. Our company has more than 200 employees including engineering and technology developers, production workers and salesmen. In order to serve our customers well, the company is specially managed with ERP software. It systematically assigns responsibilities and manages the process from pre-sales, sales and after-sales aspects such as consultation, quotation, order placement, export, remote or door-to-door commissioning and installation.

The company is equipped with advanced CNC milling machine, large-scale floor boring and milling machine processing equipment, CNC horizontal machining center, five axis machining centers, American Neway gantry machining center, laser focus analyzer, ultra-high precision digital microscope and other advanced processing and testing equipment. We also implement Harting quality management system in every step of R&D, processing and quality inspection. Our main products are press brake machines, shearing machines, laser cutting machines, punching machines and other forging machines; air duct lines, folding machines, lock forming machines, 3-roller bending machines, flange forming machines and other ventilation duct equipment; press brake molds, shearing machine blades and other machine tools. Our company has passed ISO9001 quality management system certification and several CE certifications. Our products serve many fields such as auto parts, medical devices, kitchenware, sanitary ware, aerospace and aviation. The annual production value reaches 80 million RMB. Since its establishment, our products have been sold to more than 50 countries and regions around the world, such as Europe, America, Middle East, Southeast Asia, etc. We have more than ten OEM/ODM distributors. The annual export value reaches 50 million.

SHEET METAL INTELLIGENT  
EQUIPMENT SOLUTION  
PROVIDER

**Mission:** Let China's Intelligent Manufacturing Benefit the Global Sheet Metal Processing Industry

**Vision:** Miharting brand sold to 200 countries and regions

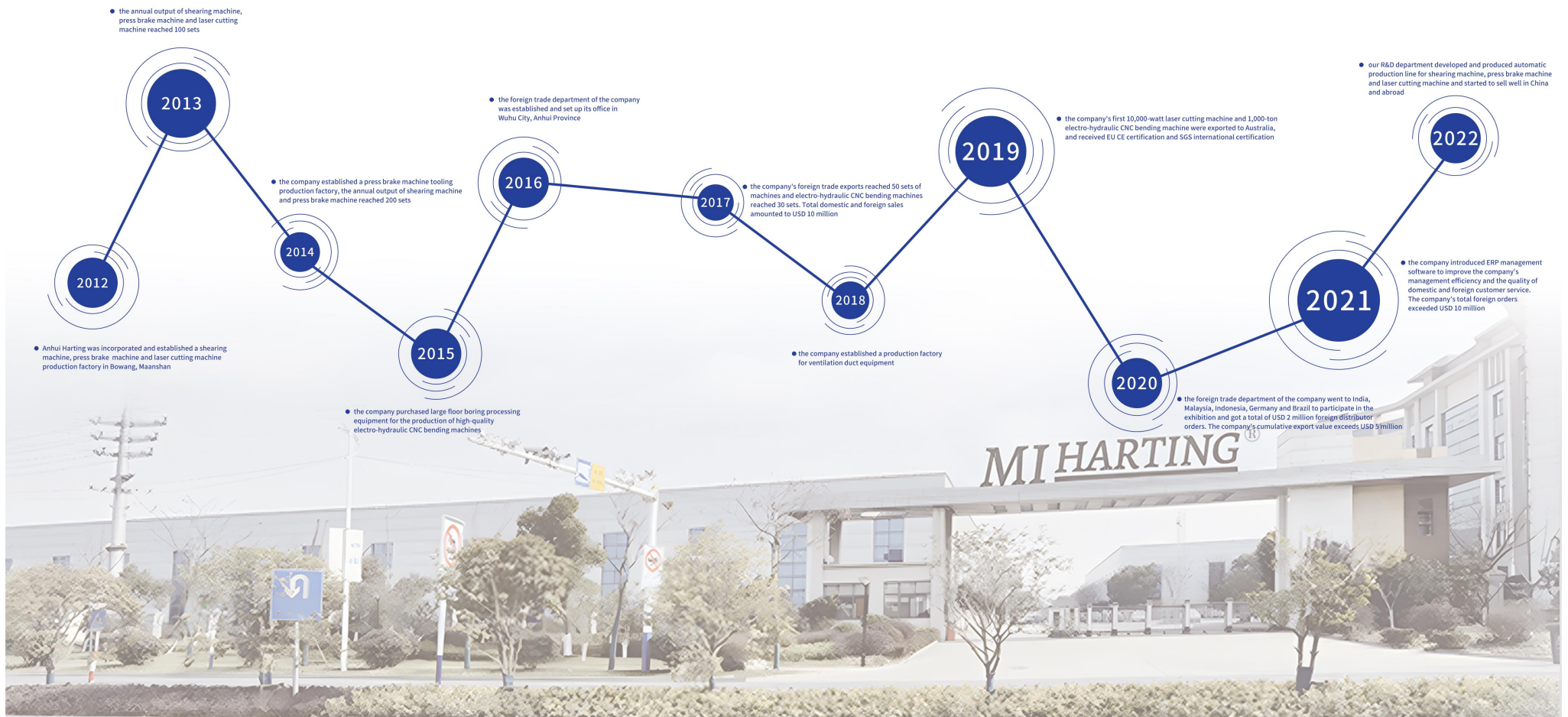
**Value:** Customer First, Integrity, Innovation





# Company History

SHEET METAL INTELLIGENT  
EQUIPMENT SOLUTION  
PROVIDER



# CE Certificate



## certificate of honor

Seeing the strength of the enterprise makes it more reassuring





# FIBER LASER CUTTING MACHINE SERIES

SHEET METAL INTELLIGENT EQUIPMENT SOLUTION PROVIDER

## FIBER-3015 SERIES

Open-Type Double-Drive Fiber Laser Cutting Machine

- Professional mechanical design, novel appearance design, multiple patented technologies, high precision processing, fast speed, small cutting seam, smooth cross-section, easy operation, low energy consumption, suitable for large-scale continuous processing, highlighting cutting competitive advantages



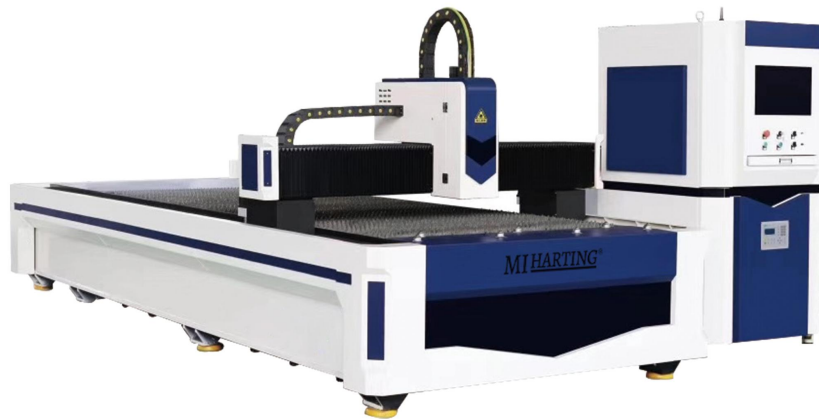
French Schneider Electric



Japan SMC Scale Valve



Japan Panasonic Servo Motor



## BRAND FIBER LASER

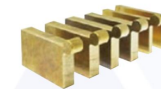


Adopting an air-cooled compact structure design, using semiconductor optical fibers as the laser generating medium, it is green and environmentally friendly, with a simple mechanical structure, constant optical path, basically maintenance free, and stable cutting performance

## LASER CUTTING SYSTEM



Intelligent visual control system, easier to understand and operation interface, intuitive adjustment of laser power, gas type and pressure, intelligent edge finding, automatic positioning, and easy realization of efficient production



## TECHNICAL PARAMETER

Model	HM-3015	HM-4015	HM-4020	HM-6015	HM-6020	HM-6025	HM-8025
machine range (mm)	3000*1500	4000*1500	4000*2000	6000*1500	6000*2000	6000*2500	8000*2500
X-axis stroke (mm)	1500	1500	2000	1500	2000	2500	2500
Y-axis stroke (mm)	3000	4000	4000	6000	6000	6000	8000
Z-axis stroke (mm)	140	140	140	140	140	140	140
laser power	1000/1500/2000/3000/4000/6000/8000/10000/12000/15000/20000W/other						
X/Y axis positioning accuracy	±0.01 (mm/min)						
X/Y axis repeated positioning accuracy	±0.02 (mm/min)						
Max positioning speed	120 (m/min)						

# FIBER LASER CUTTING MACHINE SERIES

SHEET METAL INTELLIGENT  
EQUIPMENT SOLUTION  
PROVIDER

## FIBER-4020 SERIES

Exchange Worktable Fiber Laser Cutting Machine

- A new closed design with dual workbenches for quick exchange, allowing for cutting while processing. It features fast speed, small cutting seams, smooth cross-section, easy operation, low energy consumption, and is suitable for large-scale continuous processing, highlighting the competitive advantage of cutting



Japan SHIMPO Reducer



Japan Fuji Servo Motor

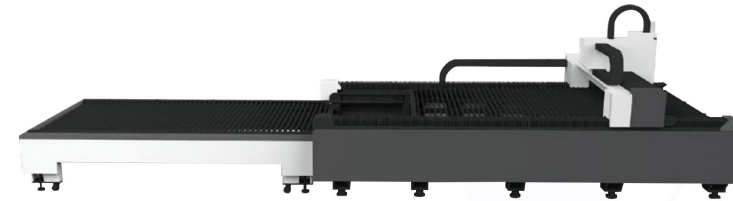


Taiwan YYC Gear Rack



## BRAND FIBER LASER

The two independent movement is not related, the accuracy does not affect each other, the slag cleaning is more convenient, with the double sales positioning, in one step, the exact, the table is driven by double motors, the exchange is smooth and fast



## LASER CUTTING SYSTEM

The extraction system is partitioned around, the suction is concentrated, the double-sided large-caliber extraction pipe is smooth, the positive wind pressure, the upper pressure and the lower suction, the strong extraction system is environmentally friendly and pollution-free



## TECHNICAL PARAMETER

Model	HM-3015	HM-4015	HM-4020	HM-6015	HM-6020	HM-6025	HM-8025
machine range(mm)	3000*1500	4000*1500	4000*2000	6000*1500	6000*2000	6000*2500	8000*2500
X-axis stroke(mm)	1500	1500	2000	1500	2000	2500	2500
Y-axis stroke(mm)	3000	4000	4000	6000	6000	6000	8000
Z-axis stroke(mm)	140	140	140	140	140	140	140
laser power	1000/1500/2000/3000/4000/6000/8000/10000/12000/15000/20000W/other						
X/Y axis positioning accuracy	±0.01(mm/min)						
X/Y axis repeated positioning accuracy	±0.02(mm/min)						
Max positioning speed	120(m/min)						



# FIBER LASER CUTTING MACHINE SERIES

SHEET METAL INTELLIGENT  
EQUIPMENT SOLUTION  
PROVIDER

## FIBER-6020 SERIES

Board One Fiber Laser Cutting Machine

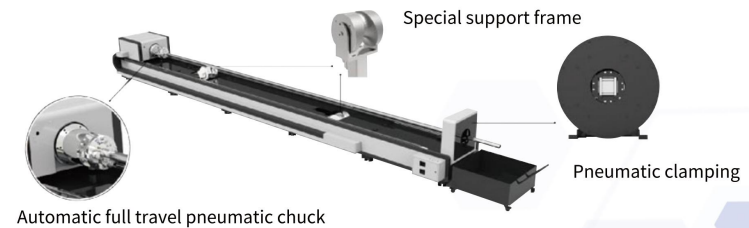
It can not only cut flat plates, but also meet the needs of users for cutting round tubes, square tubes and opening holes of molding boxes

- It can cut multiple circular pipe intersecting line holes in different directions and diameters on the main pipe
- It can cut the diagonal end face at the end of the pipe
- The end of the branch pipe intersecting with the ring main can be cut
- It can cut square holes, waist holes and round holes on the round pipe
- Can be cut steel pipe
- It can cut various shapes on the surface of the square pipe
- Can cut different specifications of steel plate
- It can open holes and cut on the molding box



## PNEUMATIC CHUCK

Pneumatic clamping, clamping force is large and constant, to ensure that the pipe is not loose and does not slip, to ensure cutting accuracy, concave wheel support frame, to prevent pipe sag deformation, improve cutting accuracy and extend the service life of the chuck



## TECHNICAL PARAMETER

Model	HM-3015	HM-4020	HM-6020	HM-6025
Cutting range (mm)	3000*1500	4000*2000	6000*2000	6000*2500
Cut length (mm)	6000	6000	6000	6000
Chuck diameter (mm)	220/320	220/320	220/320	220/320
Laser power (W)	1000-20000	1000-20000	1000-20000	1000-20000
Max positioning acceleration (m/s <sup>2</sup> )	10	10	10	10
Positioning accuracy (mm/m)	±0.02	±0.02	±0.02	±0.02
Repeated positioning accuracy (mm)	±0.03	±0.03	±0.03	±0.03

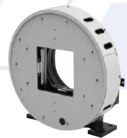
# FIBER LASER CUTTING MACHINE SERIES

SHEET METAL INTELLIGENT  
EQUIPMENT SOLUTION  
PROVIDER

## FIBER-6022 SERIES

Tube Fiber Laser Cutting Machine

- The special tube laser cutting machine consists of 7 axes
- Can achieve round pipe, square pipe, rectangular pipe, oval pipe and other pipe cutting
- To realize the one-time formation and processing of 6-meter pipe, the pipe cutting machine with different pipe lengths and diameters such as 9 meters and 12 meters can be selected
- The equipment is matched with the feeding shaft and the pulling shaft, which can greatly reduce the waste of processing tailings
- It can cut multiple tubes of different directions and diameters on the main pipe
- Can cut variable Angle groove surface
- The industry has become a pipe cutting machine, with material experts



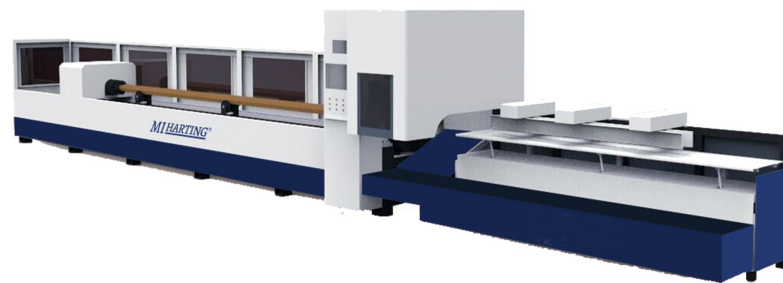
Front pneumatic chuck



Rear pneumatic chuck

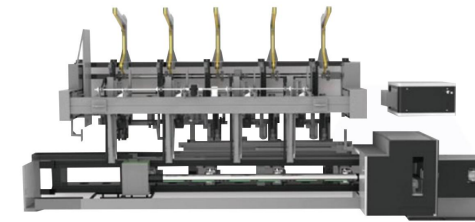


Automatic support frame



## AUTOMATIC FEEDING SYSTEM

With semi-automatic or automatic loading and unloading system, reduce the dependence on manual, reduce the labor intensity of the operator, so that the pipe cutting is so easy



## TECHNICAL PARAMETER

Model	HM-6022	HM-6032
Cut length(mm)	6000	6000
Chuck diameter(mm)	220	320
Laser power(W)	<6000	<6000
Max positioning acceleration(m/s <sup>2</sup> )	10	10
Positioning accuracy(mm/m)	±0.02	±0.02
Repeated positioning accuracy(mm)	±0.03	±0.03
Rotational axis velocity (rpm)	80	80



# FIBER LASER CUTTING MACHINE SERIES

SHEET METAL INTELLIGENT EQUIPMENT SOLUTION PROVIDER

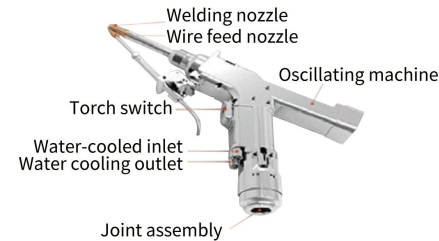
## FIBER SERIES

Handheld Laser Welding Machine

Handheld laser welding machine, flexible and convenient, welding distance is not restricted, equipped with professional welding software, mainly for long distance, large parts of laser welding, heat affected area is small, no deformation, no black, large welding depth, solid welding, to meet the welding needs of various types of metal plate.



- Adjustable weld width, automatic wire feeding welding
- 5-10 times faster than traditional welding processes
- Outdoor welding, castor belt movement
- Beautiful welds, no deformation, no grinding
- No need for professional welders to shout out beautiful work pieces

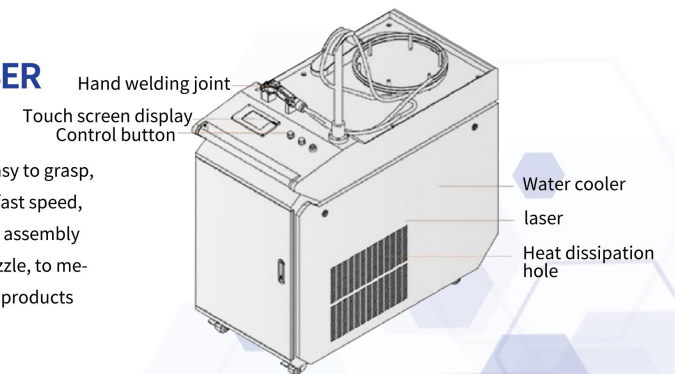


### SMALL, BEAUTIFUL EASY TO MOVE

With an integrated body, it is easy to move around and weld large workpieces

### OSCILLATING LASER WELDING HEAD

Light shape, comfortable grip, easy to grasp, easy to operate. Beautiful weld, fast speed, can be matched with wire nozzle assembly and a variety of Angle copper nozzle, to meet the welding needs of different products



### TECHNICAL PARAMETER

Power		1000W	1500W	2000W
Stainless steel docking	thickest	5mm	9mm	10mm
	Max penetration	3mm	4.5mm	5mm
Stainless steel corner joint	thickest	5mm	9mm	10mm
	Max penetration	2mm	3.5mm	4mm
Carbon steel butt joint	thickest	5mm	9mm	10mm
	Max penetration	3mm	4mm	4.5mm
Carbon steel corner joint	thickest	5mm	9mm	10mm
	Max penetration	2.5mm	3mm	3.5mm
Aluminium alloy butt joint	thickest	3mm	3mm	4mm
	Max penetration	1.2mm	1.5mm	2mm
Aluminium alloy corner joint	thickest	3mm	3mm	4mm
	Max penetration	1mm	1.8mm	2.3mm

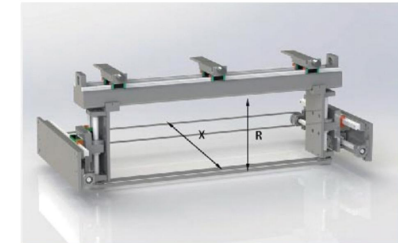
# Press brake series

SHEET METAL INTELLIGENT  
EQUIPMENT SOLUTION  
PROVIDER

## WC67K SERIES

NC Hydraulic Torsion-bar Press Brake

- Standard two axis control (Y, X)
- Mechanical torque synchronization
- Domestic famous hydraulic integrated system
- Schneider or Siemens low-voltage electrical
- Inverter control motor operation
- Imported seals
- Ball screw back gauge operation control
- Standard upper and lower molds (upper inclined block type deflection compensation)
- Front material supporting frame



### OPTICAL SAFETY GUARDS

The DSP LASER laser protection device imported from Italy can provide comprehensive and effective safety protection for the Press brake and protect the operator's personal safety.



### MECHANICAL COMPENSATION

Mechanical compensation, no oil leakage, low failure rate, and environmentally friendly.



### PREMIUM BACKGAUGE

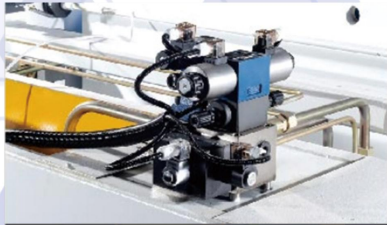
Equipped with ball screw and linear guide rail, it has high operating accuracy and fast speed.





# Press brake series

SHEET METAL INTELLIGENT  
EQUIPMENT SOLUTION  
PROVIDER



## HYDRAULIC SYSTEM

Our Press brake uses an integrated hydraulic control system, which reduces the number of pipe connections, making it more reliable and easy to maintain. Optional Rexrot.



## TORQUE SYNCHRONOUS CONTROL SYSTEM

Adopting a steel torsion shaft synchronous mechanism, the structure is very simple, but the accuracy is very high. There are two synchronous devices in the two sections of the swing rod, so the movement of the swing rod is always parallel to the workbench. The effect of balanced movement during the operation of this structure during spitting out



## PUNCH & DIE

The standard upper die and multi V lower die can be used to bend sheets of various thicknesses. More Press brake dies can be designed according to your actual use.



## FAST CLAMP

The standard equipped fast clamp will help you replace the upper mold in a very short time, convenient and time-saving

## CNC SYSTEM OPTIONAL



E21(ESTUN)



E200P(ESTUN)



E300P(ESTUN)



DA-41T(Delem)



CybTouch 8(Cybele)



TP10S

## TECHNICAL PARAMETER

Model	Nominal Pressure	Workbench length	Distance between Housings	Throat Depth	Ran stroke	Steokes above	Max open height	Main motor	Overall dimensions L*W*H
WC67Y/K-40/2500	400	2500	1900	280	100	20	320	5.5	2600*1100*1900
WC67Y/K-63/2500	630	2500	2050	300	100	12	380	5.5	2605*1725*2355
WC67Y/K-63/3200	630	3200	2670	250	100	10	380	5.5	3300*1725*2355
WC67Y/K-80/2500	800	2500	2050	250	140	10	395	7.5	2605*1725*2355
WC67Y/K-80/3200	800	3200	2660	250	140	10	395	7.5	3300/1725*2405
WC67Y/K-100/2500	1000	2500	2050	320	140	8	395	7.5	2600*1800*2540
WC67Y/K-100/3200	1000	3200	2660	320	140	8	395	7.5	3290*1740*2400
WC67Y/K-100/4000	1000	4000	3060	320	140	8	395	7.5	4090*1740*2500
WC67Y/K-100/5000	1000	5000	3960	320	140	8	395	7.5	5100*1740*2800
WC67Y/K-125/3200	1250	3200	2510	320	140	8	395	7.5	3450*1740*2800
WC67Y/K-125/4000	1250	4000	3160	320	140	8	395	7.5	4090*1740*2450
WC67Y/K-160/3200	1600	3200	2540	330	200	6	457	11	3280*1930*2800
WC67Y/K-160/4000	1600	4000	3140	330	200	6	457	11	4080*1930*2800
WC67Y/K-160/4500	1600	4500	3300	330	200	6	457	11	4580*1930*2800
WC67Y/K-200/4000	2000	4000	3140	330	200	3	457	11	4080*1930*2800
WC67Y/K-250/5000	2500	5000	3900	400	200	5	560	20	5550*1900*3100
WC67Y/K-300/3200	3000	3200	2500	400	250	3	630	19	3750*2200*3100
WC67Y/K-300/4000	3000	4000	3070	400	250	3	630	23	4550*2200*3300
WC67Y/K-300/5000	3000	5000	3900	400	250	3	630	26	5550*2200*3400
WC67Y/K-300/6000	3000	6000	4900	400	250	3	630	30	6550*2200*3500
WC67Y/K-400/4000	4000	4000	3000	400	300	2.5	770	26	4550*2600*3700
WC67Y/K-400/5000	4000	5000	3900	400	300	2.5	770	30	5550*2600*3700
WC67Y/K-400/6000	4000	6000	4900	400	300	2.5	770	36	6550*2600*3800
WC67Y/K-500/4000	5000	4000	3000	450	350	2.5	860	37	4550*2800*3700
WC67Y/K-500/5000	5000	5000	3900	450	350	2.5	860	46	5550*2800*3800
WC67Y/K-500/6000	5000	6000	4900	450	350	2.5	860	55	6500*2800*3800
WC67Y/K-600/6000	6000	6000	4900	450	350	2.5	860	60	6550*3000*4200

# Press brake series

SHEET METAL INTELLIGENT  
EQUIPMENT SOLUTION  
PROVIDER

## WE67K SERIES

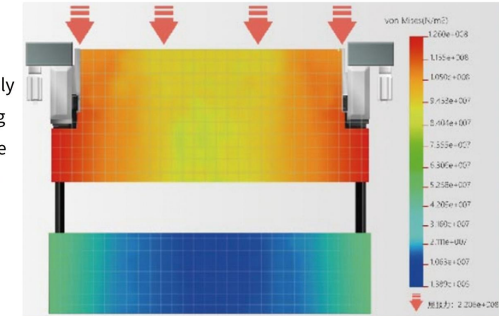
CNC Electro Hydraulic Servo Press Brake

- Imported configuration, stable and reliable
- High strength frame with thick plate and sufficient material
- High precision rear blocking system
- Standard 4+1 axis NC (Y1, Y2, X, R+W)
- Closed loop control of worktable automatic mechanical deflection compensation



## RIGID FRAME

Adopt all steel welding frame and assembly workbench structure, with high precision and good rigidity, UG\ANSYS\CAD 3D finite element analysis and optimization design are adopted for the main components to ensure the overall stability of the rack



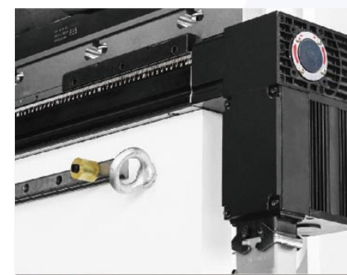
## C-TYPE THROAT DEFORMATION COMPENSATION

Accurately measure the smile deformation caused by the bending force of the machine tool and provide feedback compensation



## HIGH PRECISION MECHANICAL COMPENSATION DEVICE

Compensation closed-loop control with high control accuracy, and the compensation amount is automatically calculated and set by the CNC system, ensuring consistent bending angle throughout the entire length





# Press brake series

SHEET METAL INTELLIGENT  
EQUIPMENT SOLUTION  
PROVIDER

## LASER SAFETY PROTECTION

Provide comprehensive protection for operators in close proximity to the workpiece



## HIGH QUALITY PRESS BRAKE MOULD

Forged and processed, overall quenched, durable.  
High precision, high straightness, high repeatability,  
ultimately achieving ideal bending effect



## MOVING THE FRONT SUPPORT FRAME

Mobile front support bracket, moving along a linear guide rail, can be parked at any position, with rotation and height adjustment functions to assist in your bending work

## CNC SYSTEM OPTIONAL



CybTouch 12 PS  
(Cybelec)



VIS-640(ESA)



DA-53T(Delem)



DA-58T(Delem)



DA-66T(Delem)



DA-69T(Delem)

## TECHNICAL PARAMETER

Model	Nominal Pressure	Workbench length	Distance between Housings	Throat Depth	Ram stroke	Steokes above	Max open height	Main motor	Overall dimensions L*W*H
WE67K-40/2500	400	2500	1900	280	100	20	320	5.5	2600*1100*1900
WE67K-63/2500	630	2500	2050	300	100	12	380	5.5	2605*1725*2355
WE67K-63/3200	630	3200	2670	250	100	10	380	5.5	3300*1725*2355
WE67K-80/2500	800	2500	2050	250	140	10	395	7.5	2605*1725*2355
WE67K-80/3200	800	3200	2660	250	140	10	395	7.5	3300/1725*2405
WE67K-100/2500	1000	2500	2050	320	140	8	395	7.5	2600*1800*2540
WE67K-100/3200	1000	3200	2660	320	140	8	395	7.5	3290*1740*2400
WE67K-100/4000	1000	4000	3060	320	140	8	395	7.5	4090*1740*2500
WE67K-100/5000	1000	5000	3960	320	140	8	395	7.5	5100*1740*2800
WE67K-125/3200	1250	3200	2510	320	140	8	395	7.5	3450*1740*2800
WE67K-125/4000	1250	4000	3160	320	140	8	395	7.5	4090*1740*2450
WE67K-160/3200	1600	3200	2540	330	200	6	457	11	3280*1930*2800
WE67K-160/4000	1600	4000	3140	330	200	6	457	11	4080*1930*2800
WE67K-160/4500	1600	4500	3300	330	200	6	457	11	4580*1930*2800
WE67K-200/4000	2000	4000	3140	330	200	3	457	11	4080*1930*2800
WE67K-250/5000	2500	5000	3900	400	200	5	560	20	5550*1900*3100
WE67K-300/3200	3000	3200	2500	400	250	3	630	19	3750*2200*3100
WE67K-300/4000	3000	4000	3070	400	250	3	630	23	4550*2200*3300
WE67K-300/5000	3000	5000	3900	400	250	3	630	26	5550*2200*3400
WE67K-300/6000	3000	6000	4900	400	250	3	630	30	6550*2200*3500
WE67K-400/4000	4000	4000	3000	400	300	2.5	770	26	4550*2600*3500
WE67K-400/5000	4000	5000	3900	400	300	2.5	770	30	5550*2600*3700
WE67K-400/6000	4000	6000	4900	400	300	2.5	770	36	6550*2600*3800
WE67K-500/4000	5000	4000	3000	450	350	2.5	860	37	4550*2800*3700
WE67K-500/5000	5000	5000	3900	450	350	2.5	860	46	5550*2800*3800
WE67K-500/6000	5000	6000	4900	450	350	2.5	860	55	6500*2800*3800
WE67K-600/6000	6000	6000	4900	450	350	2.5	860	60	6550*3000*4200

# Press brake series

SHEET METAL INTELLIGENT  
EQUIPMENT SOLUTION  
PROVIDER

## 1400S SERIES

Intelligent Flexible Bending Center



### Press Type pANEL Bender

Adopting a pressure ratio design, the bending size can reach 2500mm \* 1250mm. The fastest bending speed can reach 0.2 seconds per bend



Intelligent flexible bending center is an automatic product developed for the sheet metal industry to improve production efficiency, reduce labor intensity, and improve corporate image. The equipment has a 4.0 industrial structure, intelligent flexibility, fast working speed, Rapid prototyping of workpiece, high consistency, low power consumption, simple daily maintenance, high degree of automation, and simple operation. It is suitable for processing stainless steel, cold plate, aluminum plate and other industries, and can bend right angles, but not right angles, Complex shapes with various combinations such as arcs, folds up, folds down, and pressed edges, and can be compatible with manual loading and unloading or robots

Technical Parameter	unit	Flexible bending center model	
		1400	2000
Feeding method	/	sucked type	Pressure arm type
Bending Length	mm	1400	2000
Max bending height	mm	170	170
Min bending height	mm	4	4
Min forming size on all four sides	mm	400*250	300*300
Min forming size on one side	mm	160	160
Min arc radius	mm	1.2	1.2
Minimum continuous bending speed	s	0.2	0.25
Bending angle	°	0-180	0-180
Controlled Axes	axle	9	10
Axis positioning accuracy	mm	0.01	0.01
Max feeding speed	m/min	60	120
Average power	KW	1.5	2
Total power	KW	45	55
Bending mold	mm	standard configuration	standard configuration
Equipment size	mm	3700*3000*2750	5780*3100*2300
Equipment weight	T		

### Thickness parameter of Bending plate

Material Properties	maximum thickness (mm)
stainless steel	0.3-1.0
Cold plate	0.3-1.5
Aluminum plate	0.3-2.0

### Main product configuration

name	Brand
Control system	Independent R&D
servo motor	INVT
Servo drive	INVT
Linear guide rail	Rextroth, Germany
Grinding ball screw	HIWIN, Taiwan
Electrical components	Schneider, France
pneumatic components	AirTAC, Taiwan
Oil circuit components	DALOMA
bearing	NSK
Reducer	Wanxin, Taiwan

# SHEARING MACHINE SERIES

SHEET METAL INTELLIGENT  
EQUIPMENT SOLUTION  
PROVIDER

## QC12K SERIES

Hydraulic CNC Swing Beam Shear

- Steel plate welding structure, hydraulic transmission, nitrogen cylinder return stroke, operating whip, reliable performance, and beautiful appearance
- Edge adjustment signs, adjusts lightly and quickly, continuously variable transmission
- Lighting device on the line, and continuously variable adjustment of upper carrier itinerary
- Fenwe type safety protection device
- Back gauge adopts E21S CNC, with low noise and high precision



Manual Blade Gap Adjustment Device



Brand oil pump



Backgauge Motor



## CNC SYSTEM OPTIONAL



MD11-1



E21S(ESTUN)



E200PS(ESTUN)



CybTouch 8G (CYBELEC)



DAC 360(Delem)

## TECHNICAL PARAMETER

Model	Cutting Thickness	Cutting Length	Cutting Angel	Material Strength	Backgauge Adjust Range	Stroke Times	Main motor power	Overall Dimensions
TYPE	(mm)	(mm)	(°)	(KN/CM)	(mm)	(Times/min)	(KW)	L*W*H(mm)
QC12Y/K 4*2500	4	2500	1° 30'	≤450	20-500	16	5.5	3040*1550*1550
QC12Y/K 4*3200	4	3200	1° 30'	≤450	20-500	13	5.5	3840*1550*1550
QC12Y/K 4*4000	4	4000	1° 30'	≤450	20-600	10	5.5	4600*1700*1700
QC12Y/K 4*6000	4	6000	1° 30'	≤450	20-800	5	7.5	6460*2100*3200
QC12Y/K 6*2500	6	2500	1° 30'	≤450	20-500	15	7.5	3040*1710*1620
QC12Y/K 6*3200	6	3200	1° 30'	≤450	20-500	12	7.5	3840*1710*1620
QC12Y/K 6*4000	6	4000	1° 30'	≤450	20-600	9	7.5	4620*1850*1700
QC12Y/K 6*5000	6	5000	1° 30'	≤450	20-600	8	7.5	5410*1710*1620
QC12Y/K 6*6000	6	6000	1° 30'	≤450	20-800	5	11	6480*2100*2300
QC12Y/K 8*2500	8	2500	1° 30'	≤450	20-500	11	7.5	3040*1700*1700
QC12Y/K 8*3200	8	3200	1° 30'	≤450	20-500	8	7.5	3860*1700*1700
QC12Y/K 8*4000	8	4000	1° 30'	≤450	20-600	8	7.5	4640*1700*1700
QC12Y/K 8*5000	8	5000	1° 30'	≤450	20-600	8	7.5	5400*2400*2000
QC12Y/K 8*6000	8	6000	1° 30'	≤450	20-800	8	11	6480*2100*2350
QC12Y/K 10*2500	10	2500	1° 30'	≤450	20-500	10	11	3040*1800*1700
QC12Y/K 10*3200	10	3200	1° 30'	≤450	20-500	10	11	3860*2000*1700
QC12Y/K 10*4000	10	4000	1° 30'	≤450	20-600	10	11	4650*2100*2000
QC12Y/K 10*6000	10	6000	1° 30'	≤450	20-800	10	15	6500*2100*2300
QC12Y/K 12*2500	12	2500	2°	≤450	20-600	12	18.5	3140*2050*2000
QC12Y/K 12*3200	12	3200	2°	≤450	20-600	10	18.5	3880*2150*2000
QC12Y/K 12*4000	12	4000	2°	≤450	20-600	110	18.5	4680*2150*2100
QC12Y/K 12*5000	12	5000	2°	≤450	20-600	6	18.5	3245*1900*1900
QC12Y/K 12*6000	12	6000	2°	≤450	20-1000	5	18.5	6900*2600*2700
QC12Y/K 16*2500	16	2500	2° 30'	≤450	20-600	10	18.5	3140*2150*2000
QC12Y/K 16*3200	16	3200	2° 30'	≤450	20-600	10	18.5	3880*2150*2000
QC12Y/K 16*4000	16	4000	2° 30'	≤450	20-800	10	18.5	4650*2150*2200
QC12Y/K 16*5000	16	5000	2° 30'	≤450	20-1000	6	18.5	5900*2600*2700
QC12Y/K 16*6000	16	6000	2° 30'	≤450	20-1000	5	22	6900*2700*2700
QC12Y/K 20*2500	20	2500	3°	≤450	20-800	8	22	3440*2300*2500
QC12Y/K 20*3200	20	3200	3°	≤450	20-800	8	22	4150*2350*2700
QC12Y/K 20*4000	20	4000	3°	≤450	20-1000	5	22	4850*2600*2400
QC12Y/K 20*6000	20	6000	3°	≤450	20-1000	4	22	6700*3000*3000
QC12Y/K 25*2500	25	2500	3°	≤450	20-1000	8	37	3200*2700*2900
QC12Y/K 25*3200	25	3200	3°	≤450	20-1000	5	37	4200*2400*2500
QC12Y/K 30*2500	30	2500	3°	≤450	20-1000	4	37	3300*2900*3000
QC12Y/K 30*3200	30	3200	3° 30'	≤450	20-1000	4	40	4200*2500*2600
QC12Y/K 40*2500	40	2500	4°	≤450	20-1000	3	75	3200*3300*3200
QC12Y/K 40*3200	40	3200	4°	≤450	20-1000	3	90	4300*3300*3000



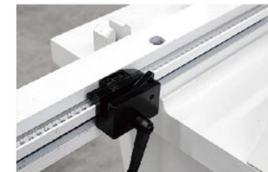
# SHEARING MACHINE SERIES

SHEET METAL INTELLIGENT  
EQUIPMENT SOLUTION  
PROVIDER

## QC11K SERIES

Hydraulic CNC Guillotine Shear

- Integrated steel sheet welded structure, eliminate stress by vibration with good rigidity and stability
- Adopt advanced hydraulic integrated valve unit with Compact-structure, minimized pipe connection, in order to improve the reliability of the system and easy for maintain
- Serial linked oil cylinder,so the angle of shear will not change during the operation of Shear
- Accumulator return is smooth and swift
- Manual adjustment of blade gap, accurate, rapid and convenient
- the angle of shear is adjustable, minimize distortion of plate
- Motorized back gauge, position display to improve its precision and convenience
- Rolling material support ball in order to minimize scuffing as well as friction resistance



Vertical adjustment and front stop position device



Angle measurement and positioning device (optional)



Fast blade gap adjustment device

## TECHNICAL PARAMETER

Model	Cutting Thickness	Cutting Width	Oil Tank	Stroke Times	Backgauge Range	Cutting Angel	Main motor power	Overall Dimensions
	mm	mm	L	times/min	mm	°	KW	mm
Q11Y/K-6*2500	6	2500	300	16-25	20-800	30' -1° 30'	7.5	3200*1950*2050
Q11Y/K-6*3200	6	3200	300	14-20	20-800	30' -1° 30'	7.5	3900*1950*2075
Q11Y/K-6*4000	6	4000	340	12-17	20-800	30' -1° 30'	7.5	4640*2000*2100
Q11Y/K-6*5000	6	5000	340	8-14	20-800	30' -1° 30'	15	5780*2100*2380
Q11Y/K-6*6000	6	6000	340	7-12	20-800	30' -1° 30'	15	6750*2200*2500
Q11Y/K-8*2500	8	2500	300	13-20	20-800	30' -1° 30'	11	3150*1970*2055
Q11Y/K-8*3200	8	3200	300	11-18	20-800	30' -1° 30'	11	3850*2050*2100
Q11Y/K-8*4000	8	4000	340	9-16	20-800	30' -1° 30'	15	4650*2100*2400
Q11Y/K-8*5000	8	5000	350	8-15	20-800	30' -1° 30'	15	5700*1950*2600
Q11Y/K-8*6000	8	6000	580	7-14	20-800	30' -1° 30'	18.5	6750*2250*2615
Q11Y/K-13*2500	13	2500	405	10-20	20-800	30' -2°	22	3250*1950*2110
Q11Y/K-13*3200	13	3200	405	9-18	20-800	30' -2°	22	3900*2070*2315
Q11Y/K-13*4000	13	4000	405	8-16	20-800	30' -2°	22	4800*2150*2460
Q11Y/K-13*5000	13	5000	505	7-14	20-1000	30' -2°	22	5800*2270*2800
Q11Y/K-13*6000	13	6000	1020	6-12	20-1000	30' -2°	30	6950*2450*3050
Q11Y/K-16*2500	16	2500	475	9-18	20-800	30' -2° 30'	22	3280*2020*2270
Q11Y/K-16*3200	16	3200	475	8-17	20-800	30' -2° 30'	22	3950*2150*2450
Q11Y/K-16*4000	16	4000	595	7-15	20-800	30' -2° 30'	22	4800*2130*2550
Q11Y/K-16*6000	16	6000	1020	6-11	20-1000	30' -2° 30'	37	7000*2500*3000
Q11Y/K-16*8000	16	8000	2060	4-8	20-1000	30' -2° 30'	45	9050*3180*3500
Q11Y/K-20*2500	20	2500	510	7-16	20-800	30' -3°	30	3200*2220*2520
Q11Y/K-20*3200	20	3200	510	6-15	20-800	30' -3°	30	3950*2150*2600
Q11Y/K-20*4000	20	4000	640	6-14	20-800	30' -3°	37	4750*2400*2900
Q11Y/K-20*6000	20	6000	1500	5-11	20-1000	30' -3°	30*2	7000*2850*3350
Q11Y/K-25*2500	25	2500	750	5-14	20-800	30' -3° 30'	37	3270*2000*2650
Q11Y/K-25*3200	25	3200	820	5-10	20-800	30' -3° 30'	37	3970*2200*2670
Q11Y/K-25*4000	25	4000	1200	5-8	20-800	30' -3° 30'	45	4900*2800*3190
Q11Y/K-30*2500	30	2500	780	5-12	20-1000	30' -3°	45	3450*2500*2900
Q11Y/K-30*3200	30	3200	1000	4-10	20-1000	30' -3° 30'	55	4150*2700*2850
Q11Y/K-30*4000	30	4000	1400	3-7	20-1000	30' -3° 30'	55	5200*2600*3350
Q11Y/K-40*2500	40	2500	1370	4-8	20-1000	30' -4°	55	4000*2950*3150

# PLANER MACHINE SERIES

SHEET METAL INTELLIGENT  
EQUIPMENT SOLUTION  
PROVIDER

## Precision CNC Gantry Planer Machine

- Gantry structure, convenient loading and unloading. Environmental friendly air-conditioning, 3+1 CNC axis, servo motor control.
- Fully automatic processing to improve the accuracy of the trough. South Korea imported hydraulic system provides power, fast and reliable, low energy consumption and low noise.
- The bronze helical gears, 45 steel casting helical gear, and QH silent guide rail drive, the cutting process is smooth and efficient.
- The table is automatically repaired, the height is adjustable, the NC program is designed reasonably, with the keyboard-type input processing program.
- The working speed can be adjusted with the knob, depending on different materials.



Width	1250mm	1250mm	1250mm
Length	4000mm	5000mm	6000mm
Thickness	0.5-4.0mm	0.5-4.0mm	0.5-4.0mm
V-shaped margin	6-8mm	6-8mm	6-8mm
X-axis max travel speed	70m/min	70m/min	70m/min
X-axis max return speed	80m/min	80m/min	80m/min
Y1 axis max travel speed	20m/min	20m/min	20m/min
Z axis max return speed	20m/min	20m/min	20m/min
Y1 axis, Z axis repeated positioning accuracy	±0.01mm	±0.01mm	±0.01mm
X axis motor power	5.5KW	5.5KW	5.5KW
Y1, Y2, Z axis motor power	1KW	1KW	1KW
Dimensions (length*width*height)	6150*2350*1560mm	7150*2350*1560mm	8150*2350*1560mm
Weight	8.5T	9T	11T

## Precision CNC Vertical Planer Machine

- The main machine body is connected by high-strength bolts. After integrated processing and tempering treatment, it has strong shock resistance and good stability.
- Adopting a rear feeding structure and ingenious design of a universal ball, the equipment will not damage the surface of the plate during feeding and discharging.
- As a power transmission component, high-precision ball screw has high machining accuracy, low noise, and low energy consumption.



Width	1250mm	1250mm	1250mm
Length	4000mm	5000mm	6000mm
Thickness	0.4-4.0mm	0.4-4.0mm	0.4-4.0mm
V-shaped margin	8mm	8mm	8mm
X-axis max travel speed	70m/min	70m/min	70m/min
X-axis max return speed	85m/min	85m/min	85m/min
Y1 axis max travel speed	20m/min	20m/min	20m/min
Y1 axis, Z axis repeated positioning accuracy	±0.01mm	±0.01mm	±0.01mm
X axis motor power	4.5KW	4.5KW	4.5KW
Y1, Y2, Z axis motor power	1KW	1KW	1KW
Dimensions (length*width*height)	5740*2350*2110mm	6740*2350*2110mm	7740*2350*2110mm
Weight	10.5T	12T	18T

# IRONWORKER MACHINE SERIES

SHEET METAL INTELLIGENT  
EQUIPMENT SOLUTION  
PROVIDER

## Q35Y-20 SERIES

Hydraulic Ironworker Machine

- Using hydraulic transmission, is the present domestic multifunctional combined punching and shearing machines. the latest products to flat steel, square steel, round steel, angle steel, channel steel, I-beam steel to shear,punching,die cutting,can cut different angle 45°



Punching Station

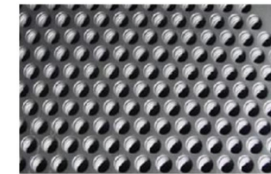


Material pressing device



Die shearing station

## WORKPIECE DISPLAY



## TECHNICAL PARAMETER

model	Punching Pressure(T)	Max cutting thickness of steel plates(mm)	Plate strength (N/mm <sup>2</sup> )	Angle of Shear (°)	A trip size(T*V) (mm)	Slicer trip(mm)	Trips frequency(times/min)	Throat depth (mm)	Punch depth (mm)	Max punching diameter (mm)	Main Motor Power (KW)	Overall dimensions (L*W*H) (mm)
Q35Y-12	35	12	≤450	7°	12*160 6*300	35	10-18	115	12	25	4	950*550*1800
Q35Y-16	60	16	≤450	7°	16*250 8*400	80	11-20	300	16	25	5.5	1740*810*1830
Q35Y-20	90	20	≤450	8°	20*330 10*480	80	12-20	355	20	30	7.5	1950*900*1950
Q35Y-25	120	25	≤450	8°	25*330 16*600	80	8-18	400	25	35	11	2355*960*2090
Q35Y-30	160	30	≤450	8°	30*335 20*600	80	6-16	600	28	38	15	2800*1050*2450
Q35Y-40	200	40	≤450	8°	40*335 30*600	100	6-16	530	35	40	18.5	2900*1100*2500
Q35Y-50	250	50	≤450	8°	50*300 30*750	100	6-12	600	40	45	18.5	3200*1440*2500

H-steel,channel steel need to be customized

Profile	Round Bar	Square Bar	Equal Angle		T-Bar		Joist	Channel
			90° Shearing	45° Shearing	90° Shearing	45° Shearing		
Section View								
Q35Y-12	35	30×30	86×86×8					
Q35Y-16	45	40×40	120×120×12	50×50×5	125×125×12	60×60×8	120×74×5	120×53×5.5
Q35Y-20	50	50×50	140×140×12	70×70×10	140×140×12	70×70×10	160×88×6	160×63×6.5
Q35Y-25	60	50×50	160×160×14	60×60×6	160×160×14	80×80×10	200×102×9	200×75×9
Q35Y-30	65	55×55	180×180×16	80×80×8	180×180×16	80×80×10	280×124×10.5	280×86×11.5
Q35Y-40	70	60×60	200×200×18	80×80×10	200×200×18	100×100×10	300×130×13	300×89×11.5
Q35Y-50	80	65×65	200×200×18	100×100×10	200×200×18	120×120×12	320×130×13	320×92×12

Sample parameters are subject to change without prior notice!



# PUNCH PRESS SERIES

SHEET METAL INTELLIGENT  
EQUIPMENT SOLUTION  
PROVIDER

## Y32 SERIES

4-column Hydraulic Press

- This machine is suitable for the pressing process of plastic materials, such as punching, bending, flanging, sheet stretching, etc. Can also be engaged in calibration, pressing, grinding wheel forming, cold extrusion of metal parts forming, plastic products and powder products pressing and forming processes
- This machine has an independent power mechanism and electrical system, and adopts centralized button control, which can achieve three operation modes: adjustment, manual, and semi-automatic
- The working pressure, pressing speed, and travel range of this machine can be adjusted according to process requirements. And it can complete two process methods: constant pressure and constant range forming. The constant pressure forming process has pressure holding and delayed automatic return action after pressing



Specification	Unit	Y32-63	Y32-100	Y32-160	Y32-200	Y32-315	Y32-400	Y32-500	Y32-630	Y32-800	Y32-1000	Y32-1250	Y32-1600	Y32-2000	Y32-2500	Y32-3000	
Nominal force	KN	630	1000	1600	2000	3150	4000	5000	6300	8000	10000	12500	16000	20000	25000	30000	
Knockout force	KN	160	250	250	400	630	830	1000	1600	2000	2000	2000	2500	3150	4000	5000	
Max Height	mm	800	800	1000	1120	1250	1250	1500	1500	1500	1600	1500	1600	1800	2000	2000	
Slide stroke	mm	500	500	500	710	800	800	900	900	900	1000	900	1000	1200	1200	1200	
Knockout stroke	mm	200	200	200	250	300	300	360	360	360	450	400	450	450	500	500	
Slider speed	Descent	mm/s	40	38	80	80	120	100	100	90	90	90	85	85	80	100	
	Pressing	mm/s	7	10	6-15	5-12	5-12	4-10	4-10	5-12	4-10	4-10	4-10	4-10	4-10	5-12	
Return	mm/s	580	70	80	70	65	50	50	60	90	100	85	85	60	60	120	
	L-R	mm	550	630	800	900	1200	1200	1400	1600	2000	2000	2500	2500	3000	4000	
Table area	F-B	mm	630	630	800	900	1200	1200	1400	1600	1600	1800	2000	2000	2500	2600	
	L-R	mm	700	700	550	550	700	700	715	500	300	300	200	200	200	200	
Overall dimensions	L-R	mm	2370	2200	2400	2450	2830	2850	3300	3600	4800	7010	5890	6500	6870	8530	
	F-B	mm	900	1200	1300	1300	1500	1500	1500	1800	2854	3000	3450	3900	2500	5000	4000
	H	mm	2770	2800	3200	3650	4300	4400	5400	5400	5940	5740	6980	7500	7500	7840	8500
Main motor power	KW	7.5	11	15	15	22	22	22	44	60	60	60	70	90	120	170	

Parameters change without notice

## Y41 SERIES

Single Column Hydraulic Press

- This series of machine tools adopts hand foot linkage operation. Easy to operate. The hydraulic system adopts integrated plug-in, with a compact structure and sensitive and reliable action. Low power and noise

### Applications

- The machine tools of this series of products can be used for the calibration process of shafts and other parts. It can also be used for stretching, forming, and blanking processes of shaft and sleeve parts, as well as simple plate shaped parts



Type	Unit	25T	40T	63T	100T	160T	200T	250T	315T	400T	500T	1500T
Nominal force	KN	250	400	63	1000	1600	2000	2500	3150	4000	5000	15000
Max hydraulic pressure(KN)	Mpa	21	25	25	25	25	25	26	25	25	25	25
Max opening height(mm)	mm	430	510	550	500	650	900	900	900	900	900	1000
Slipper stroke(mm)	mm	500	500	500	500	500	500	500	500	500	500	500
Slider descending speed	mm	≥35	403	30	24	≥20	18	23	23	23	23	18
Slider return speed	mm	≥85	80	70	50	≥80	55	55	55	55	55	50
Laryngeal deep	mm	320	250	250	320	360	380	380	400	400	450	500
Workbench size	Before and after	mm					700	700	750	750	750	800
	around	mm					900	900	900	900	900	1000
Height of workbench from ground	mm						750	800	850	900	900	900
Pump name		Pressure compensated variable axial piston pump										
Motor power	Kw	5.5	7.5	7.5	11	15	15	15	15	22	37	2-45

Sample parameters are subject to change without prior notice!

# PUNCH PRESS SERIES

SHEET METAL INTELLIGENT  
EQUIPMENT SOLUTION  
PROVIDER

## JH/JF21 SERIES

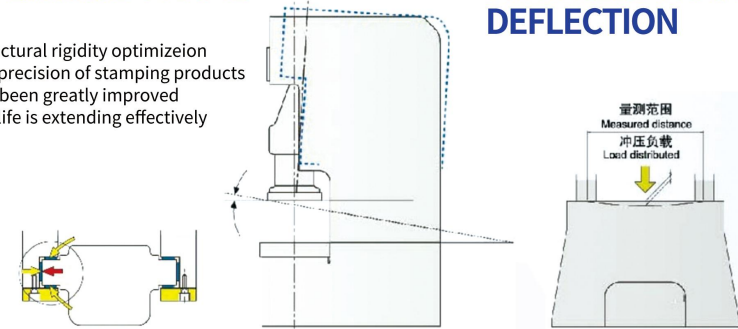
Pneumatic Punching Machine

- Using of the pneumatic friction clutch and brake gets smooth combination, less abrasion long service life
- PLC controlled electrical has the operation specifications of inching, single and continuous
- The slider is fitted with light type safety, overload is protector is collapse, which guarantees the machine from being damaged
- Has the advantages of versatility, high precision, reliable performance, easy operation
- Automatic feeding device can realize the automation of punching operation



## SUPER RIGID FRAME

- Structural rigidity optimization the precision of stamping products has been greatly improved Die life is extending effectively



## MINIMIZED FRAME DEFLECTION

Technical Parameter	Unit	JH/JF21-60	JH/JF21-80	JH/JF21-100	JH/JF21-125	JH/JF21-160	JH/JF21-200
Nominal force	Kn	600	800	1000	1250	1600	2000
Slide stroke	mm	140	160	180	180	200	250
Number of stroke	Single speed	70	60	60	55	50	45
	Speed promise	50-80	40-75	35-70	35-65	30-55	25-45
Maxium shut height	mm	300	320	350	370	400	450
Closing height adjustment	mm	70	80	90	90	100	110
Distance between center of the slide to frame	mm	270	290	350	370	390	430
Distance between column of the body	mm	560	650	680	710	720	900
Working table size	F-B	520	650	680	720	760	840
	L-R	870	1000	1070	1120	1170	1390
Work bedplate hole size	Diameter	150	150	160	160	/	/
	F-B	400	430	520	520	580	880
Slider bottom size	L-R	480	560	620	620	700	650
	Diameter	50	60	70	70	70	70
Size of the handle hole	Depth	60	80	80	80	100	100
	F-B	1615	1915	2200	2300	2355	2690
Appearance size	L-R	1200	1382	1419	1480	1515	1540
	Height	2570	2820	3190	3220	3250	3810
Motor power		7.5	7.5	11	15	15	18.5

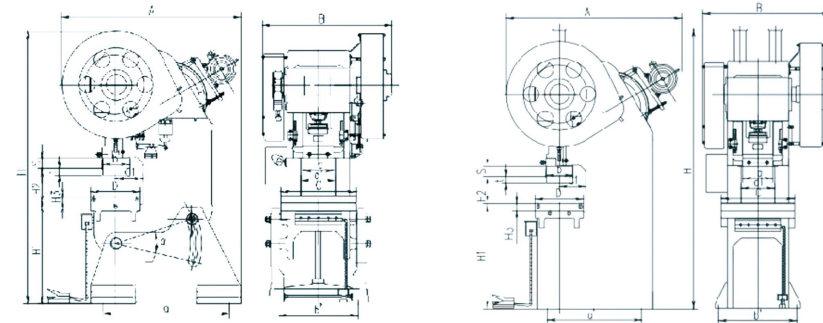
# PUNCH PRESS SERIES

SHEET METAL INTELLIGENT  
EQUIPMENT SOLUTION  
PROVIDER

## J23/J21 SERIES

Single crank CFrame Power Press Machine

- The J23/J21 series press is a regular tilting/fixed desktop press with a simple structure, convenient operation, and reliable performance. It adopts a rigid rotary key clutch for maintenance and use
- The J21 series press is an open fixed table press that increases the depth of the throat, with a large workspace and is widely used for stamping processing of large-sized panels. All adopt steel plate welded body, with high strength and stiffness. J21-10-160 is evolved from the J21 series press, and adopts a rigid rotary key clutch, which is convenient for operation and maintenance



Model	J23-16	J23-25	J23-40	J23-63	J23-80	J23-100	J23-125	J23-200	J23-250
Nominal force(KN)	160	250	400	630	800	1000	1250	2000	2500
Slide stroke(mm)	50	70	80	80	100	100	140	145	145
Number of slider strokes(times/min)	110	65	50	50	50	40	38	38	38
Maximum Die Set Height(mm)	170	200	220	250	270	300	370	420	410
Adjustment amount of mold installation height(mm)	30	30	45	50	60	80	100	100	100
Distance from the center of the slider to the body(mm)	160	200	220	250	260	310	395	100	400
Workbench size(mm)	320*460	350*520	390*630	420*650	470*750	570*860	740*1150	780*1250	780*1300
Mold handle hole size(mm)	40*60	40*60	50*70	50*70	60*80	60*80	60*85	60*85	60*85
Workbench thickness(mm)	45	50	70	70	80	80	110	120	130
Size of the bottom surface of the slider(mm)	120*180	170*220	210*250	240*280	260*300	360*400	360*430	410*500	410*500
motor power(kw)	1.5	3	4	5.5	5.5	7.5	11	15	15
Overall dimensions(mm)	1130*630*1890	1120*860*2200	1600*1100*2250	1760*1100*2520	1765*1265*2650	1940*1490*2850	2350*1780*3600	2540*2010*3800	2760*2280*3850

Model	J21-25	J21-40	J21-63	J21-80	J21-100	J21-160
Nominal force(KN)	250	400	630	800	1000	1600
Slide stroke(mm)	70	80	80	100	100	160
Number of slider strokes(times/min)	70	50	50	50	40	50
Maximum Die Set Height(mm)	200	220	250	270	300	500
Adjustment amount of mold installation height(mm)	30	40	50	60	80	110
Distance from the center of the slider to the body(mm)	710	710	710	800	800	950
Workbench size(mm)	400*600	420*650	440*670	470*750	570*860	740*1300
Mold handle hole size(mm)	40*60	50*70	50*70	60*80	60*80	65*90
Workbench thickness(mm)	50	70	70	80	80	110
Size of the bottom surface of the slider(mm)	170*220	210*250	240*280	260*300	360*400	800*1300
motor power(kw)	3	4	5.5	5.5	7.5	15
Overall dimensions(mm)	1620*800*1950	1730*1100*2300	1980*1100*2290	2260*1265*2450	2230*1490*2700	2200*1545*3530



# PUNCH PRESS SERIES

## W12H (NC, CNC) SERIES

Full-hydraulic 4-roller Rolling Machine



- The W12 series four roller plate rolling machine has mechanical rotation for the upper roller, hydraulic transmission for the lifting and lowering of the lower roller and side roller. The operation adopts electrical centralized control. This machine can complete pre bending at both ends of the plate and roll cylindrical and curved workpieces in one feeding. It can also meticulously shape and level the metal plate, with direct pre bending, trouble saving, and material saving effects

## W11 SERIES

Symmetric Rolling Machine With Three Rollers

- The W11 three roller plate rolling machine is equipped with mechanical lifting and transmission, and the upper roller can be separated and electrically lifted for material retrieval. And various special side wheels can be installed according to customer requirements to achieve the function of rolling angle iron, rolling round pipes and other shaped steel products



## W11S SERIES

Upper Roller Universal Bending Machine

- hydraulic transmission
- High precision end pre bending
- NC control, providing work efficiency
- Integrated structure, easy to move
- Rich curved shapes



Main Technical Parameters of W12H Series Four Roll Plate Rolling Machine

Specification	Max pre-bending thickness (mm)	Max rolling thickness (mm)	Max rolling width (mm)	Plate Yield limit MPA	Rolling speed (m/min)	Upper roller dia (mm)	Lower roller dia (mm)	Side roller dia (mm)	Motor power (KW)
W12-6*2000	6	6	2000	265	5.5	180	180	145	5.5
W12-6*2500	6	6	2500	265	5	210	210	165	7.5
W12-8*2000	6	8	2000	265	5	215	215	165	11
W12-8*2500	6	8	2500	265	5	230	230	180	11
W12-12*2000	10	12	2000	265	5	260	260	200	18.5
W12-12*2500	10	12	2500	265	5	280	280	220	18.5
W12-16*2000	12	16	2000	265	5	280	280	220	18.5
W12-16*2500	12	16	2500	265	5	330	330	260	22
W12-16*3200	12	16	3000	265	5	360	360	280	30
W12-20*2000	16	20	2000	265	5	330	330	260	22
W12-20*2500	16	20	2500	265	5	360	360	280	30
W12-25*2000	20	25	2000	265	5	360	360	280	30
W12-25*2500	20	25	2500	265	4.5	410	400	320	37
W12-30*2000	25	30	2000	265	4.5	410	400	320	37
W12-30*2500	25	30	2500	265	4.5	470	470	390	37
W12-30*3000	25	30	3000	265	4.5	560	520	420	45
W12-40*2500	35	40	2500	265	4.5	560	520	420	45
W12-40*3000	35	40	3000	265	4.5	650	580	480	55
W12-50*2500	40	50	2500	265	4	650	620	500	55
W12-50*3000	40	50	3000	265	3.5	720	650	520	55
W12-60*3000	50	60	3000	265	3.5	750	710	560	75
W12-70*3000	60	70	3000	265	3	750	720	600	75
W12-80*3000	70	80	3000	265	3	800	780	620	75
W12-90*3000	80	90	3000	265	3	840	820	660	90
W12-100*3000	85	100	3000	265	3	900	880	700	90
W12-120*3000	100	120	3000	265	3	1020	980	800	132

Main Technical Parameters of W11 Series Symmetrical Three Roll Plate Rolling Machine

Model	Max thickness of plate (mm)	Max width of plate (mm)	Plate Yield limit MPA	Rolling speed (m/min)	Min diameter for fully loaded rolling (mm)	Upper roller dia (mm)	Lower roller dia (mm)	Distance between two rollers (mm)	Main motor power (KW)	Overall dimensions (L*W*H) (mm)
W11-6*1500	6	1500	265	7.16	380	180	160	210	5.5	3310*1210*1330
W11-6*2000	6	2000	265	7.16	380	180	160	220	5.5	3810*1210*1330
W11-6*2500	6	2500	265	7.16	380	190	170	260	7.5	4310*1210*1330
W11-8*2000	8	2000	265	6.45	500	240	200	310	11	5200*1400*1200
W11-8*2500	8	2500	265	7.16	450	190	170	260	7.5	3810*1210*1330
W11-8*3000	8	3000	265	6.45	500	240	200	310	11	4500*1420*1610
W11-12*2000	12	2000	265	5	900	240	200	310	11	4050*1420*1610
W11-12*2500	12	2500	265	5	750	260	220	350	11	4500*1500*1300
W11-12*3000	12	3000	265	5	650	280	240	360	15	5500*1500*1300
W11-16*2000	16	2000	265	5	750	260	220	330	11	4500*1500*1300
W11-16*2500	16	2500	265	5	750	280	240	360	15	5000*1500*1300
W11-16*3200	16	3200	265	5	900	340	280	440	22	6300*1600*1900
W11-20*2000	20	2000	265	5	750	280	240	360	15	4500*1500*1300
W11-20*2500	20	2500	265	5	850	340	280	440	30	5500*1600*1900
W11-25*2000	25	2000	265	4.5	850	340	280	440	30	5100*1600*1900
W11-25*2500	25	2500	265	4.5	900	380	300	490	37	6000*1600*2150
W11-30*2000	30	2000	265	4.34	900	380	300	490	37	5900*1460*2150
W11-30*2500	30	2500	265	5	1100	460	380	600	45	6900*2300*2800
W11-30*3000	30	3000	265	5	1200	460	400	600	45	7400*2300*2800
W11-30*3200	30	3200	265	5	1200	500	400	600	45	7600*2300*2800
W11-40*2000	40	2000	265	5	1200	480	400	600	45	6400*2300*2800

Main Technical Parameters of W11S Series Upper Roller Universal Plate Rolling Machine

Model	Max thickness of plate (mm)	Thickness of pre-bending (mm)	Max width of plate (mm)	Upper roller dia (mm)	Lower roller dia (mm)	Centre distance of lower roller (mm)	Main motor power (KW)	Hydraulic motor power (KW)
W11S-8*2000	8	6	2000	235	135	180	5.5	2.2
W11S-8*2500	8	6	2500	245	145	170	7.5	4
W11S-12*2000	12	10	2000	255	150	200	7.5	4
W11S-12*2500	12	10	2500	270	150	245	11	5.5
W11S-12*3200	12	10	3200	300	165	300	15	5.5
W11S-16*2000	16	12	2000	270	150	245	11	5.5
W11S-16*2500	16	12	2500	300	165	270	15	5.5
W11S-16*3200	16	12	3200	300	180	300	15	7.5
W11S-20*2000	20	16	2000	300	165	270	15	5.5
W11S-20*2500	20	16	2500	330	175	300	15	7.5
W11S-25*2000	25	20	2000	350	180	330	22	7.5
W11S-25*2500	25	20	2500	380	200	360	22	11
W11S-30*2000	30	25	2000	390	220	360	30	11
W11S-30*2500	30	25	2500	410	235	380	30	11
W11S-30*3000	30	25	3000	450	250	420	30	11
W11S-30*3200	30	25	3200	450	250	420	30	15
W11S-30*4000	30	25	4000	560	290	500	37	15
W11S-40*2000	40	35	2000	480	250	420	37	22
W11S-40*2500	40	35	2500	500	275	450	45	22
W11S-40*3000	40	35	3000	540	290	500	55	22
W11S-40*4000	40	35	4000	610	310	560	75	22
W11S-50*3200	50	40	3200	650	360	700	75	22
W11S-50*4000	50	40	4000	700	380	700	75	22
W11S-60*5000	60	50	5000	850	450	850	90	37
W11S-60*4000	60	50	4000	780	440	820	90	37
W11S-60*5000	60	50	5000	850	460	880	90	37
W11S-70*3000	70	60	3000	710	420	750	75	37
W11S-80*2500	80	70	2500	710	420	780	75	37

Sorry no notice if parametre change!